

# VANCOUVER HOUSE

# ARCHITECT SERIES

# 905



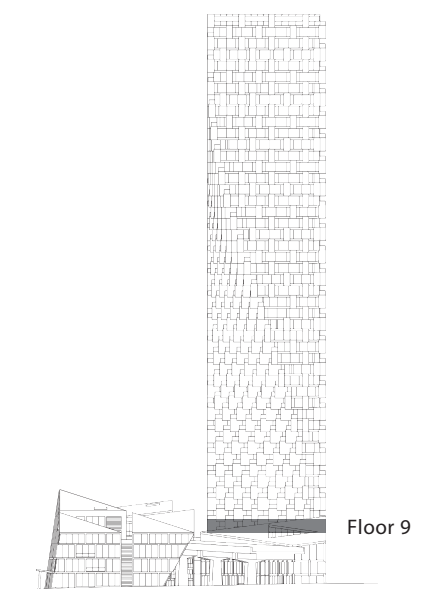
TWO BEDROOM

TOTAL LIVING 1130 SQ FT

Indoor Living 852 sq ft

Outdoor Living 278 sq ft

This stunning light-filled corner home features two spacious bedrooms and two full bathrooms. The open-concept indoor living space is complemented by two terraces: an expansive south-facing terrace accessible from the master bedroom and an equally generous west-facing terrace oriented towards the water. The floor-to-ceiling glazing blends the outdoor living space with the luxurious well-appointed interiors of this home.



westbank

BIG

THERE ARE NO REPRESENTATIONS OR WARRANTIES HEREIN, MADE BY THE DEVELOPER, ITS AGENTS OR EMPLOYEES, OR ANY OTHER PERSON ON BEHALF OF THE DEVELOPER, OTHER THAN THOSE CONTAINED IN A CONTRACT OF PURCHASE AND SALE BETWEEN A PURCHASER AND THE DEVELOPER AND IN THE DISCLOSURE STATEMENT FOR THE DEVELOPMENT TO THE EXTENT MANDATED BY LAW. IN PARTICULAR, THE PURCHASER ACKNOWLEDGES AND AGREES THAT THE MATERIALS, SPECIFICATIONS, DETAILS, DIMENSIONS, LAYOUT AND FLOORPLANS SET OUT HEREIN OR OTHERWISE VIEWED BY THE PURCHASER ARE APPROXIMATE AND SUBJECT TO CHANGE WITHOUT NOTICE.

20140718

ARCHITECT  
SERIES

905

TWO BEDROOM

VANCOUVER  
HOUSE