

VANCOUVER HOUSE

ARCHITECT SERIES

701



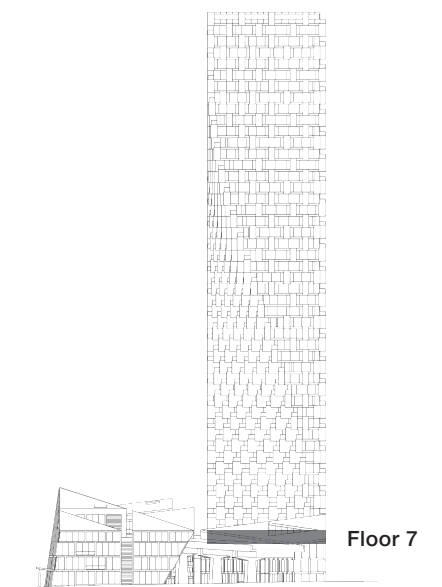
TWO BEDROOM

TOTAL LIVING 1190 SQ FT

Indoor Living 853 sq ft

Outdoor Living 337 sq ft

This inviting corner home features two terraces offering 331 square feet of outdoor living-- a full third of the total living space. A tranquil master bedroom complete with four-piece ensuite opens onto the south-facing area of the expansive wrap-around terrace, while the adjoining living, dining, and kitchen area orients to both directions with views of May and Lorne Brown Park. The second bedroom enjoys a private west-facing terrace.



westbank

BIG

ARCHITECT
SERIES

701

TWO BEDROOM

VANCOUVER
HOUSE