

VANCOUVER HOUSE

ARCHITECT SERIES

601



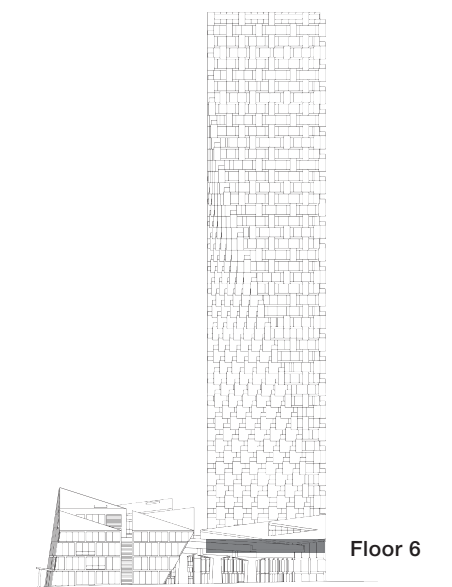
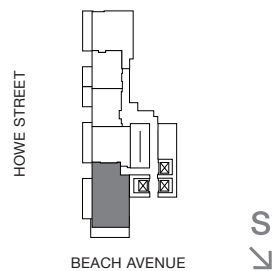
TWO BEDROOM

TOTAL LIVING 1128 SQ FT

Indoor Living 851 sq ft

Outdoor Living 277 sq ft

This inviting corner abode features both west- and south-facing terraces, offering 269 square feet of private outdoor living for your enjoyment. A serene master bedroom complete with four-piece ensuite opens onto the south terrace, while the adjoining living, dining, and kitchen area opens onto both terraces with views of May and Lorne Brown Park. The stylish design and floor-to-ceiling glazing seamlessly blends the indoor and outdoor environments.



westbank

BIG

ARCHITECT
SERIES

601

TWO BEDROOM

VANCOUVER
HOUSE