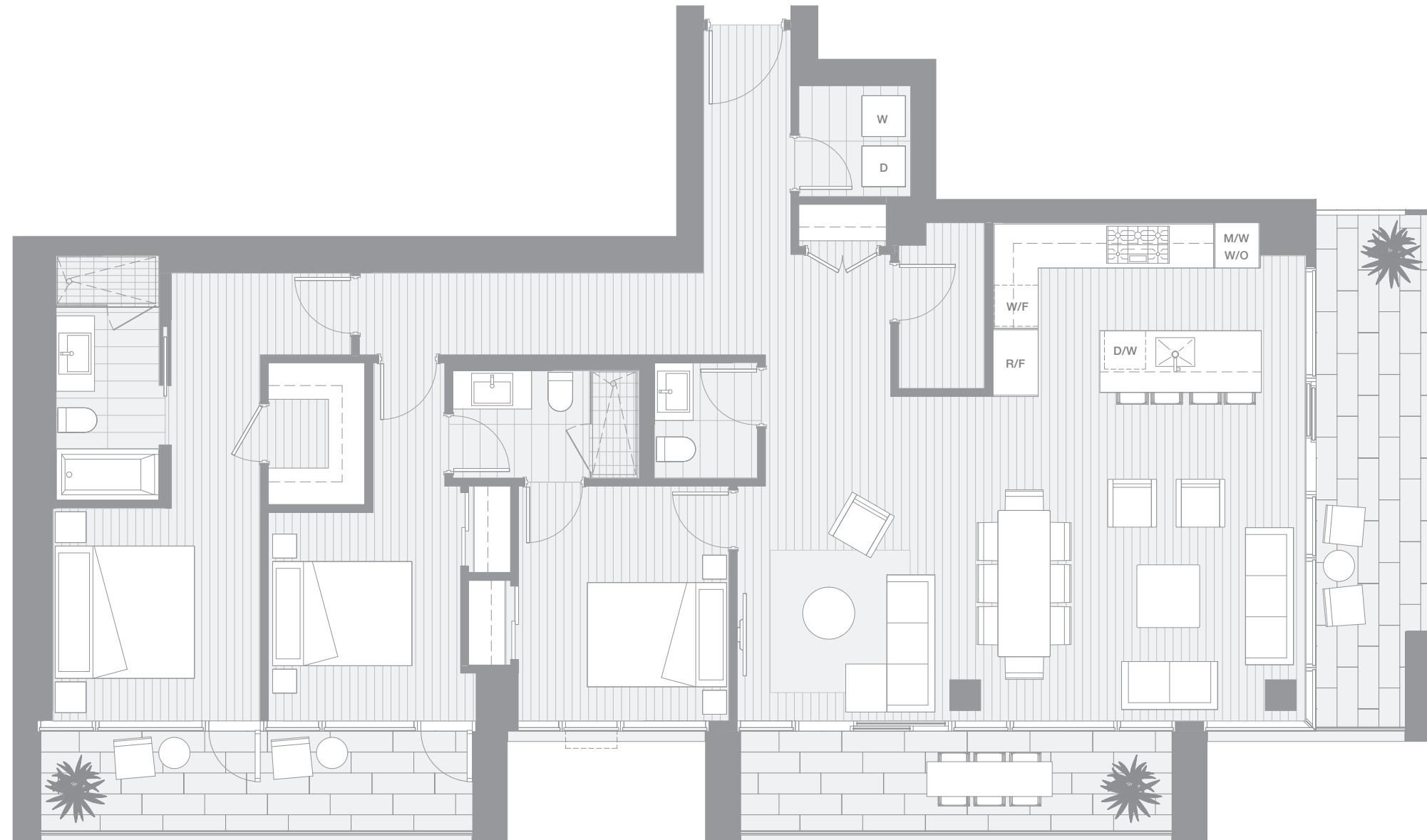


VANCOUVER HOUSE

ARCHITECT SERIES

4603



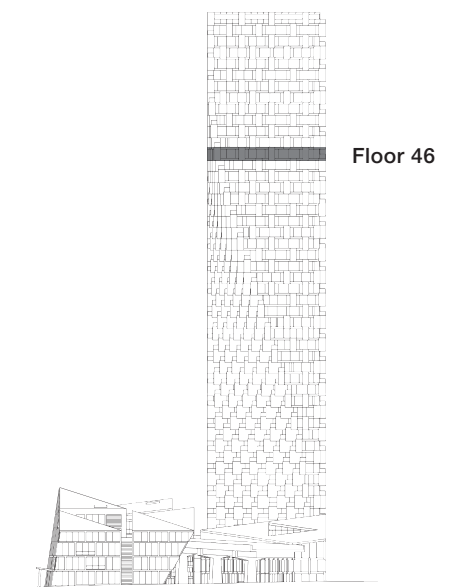
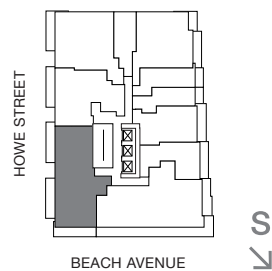
THREE BEDROOM & FAMILY ROOM

TOTAL LIVING 1972 SQ FT

Indoor Living 1570 sq ft

Outdoor Living 402 sq ft

This palatial corner abode embodies all the comforts of a fabulous home in the sky. The master and second bedroom enjoy a private west-facing terrace. While west and south facing terraces embrace the open-concept living, dining, kitchen and family area, offering panoramic views of Stanley Park, English Bay, Point Grey, and Granville Island.



westbank

BIG

ARCHITECT
SERIES

4603

THREE BEDROOM & FAMILY ROOM

VANCOUVER
HOUSE