

VANCOUVER HOUSE

ARCHITECT SERIES

4511

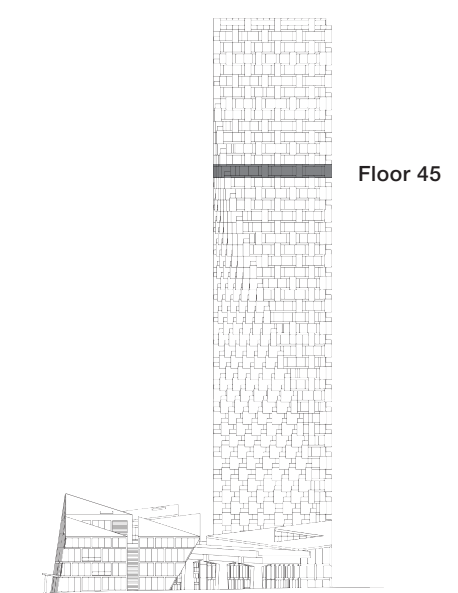
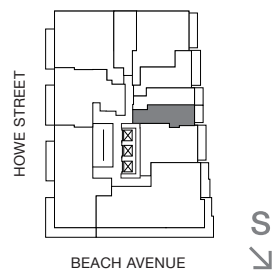
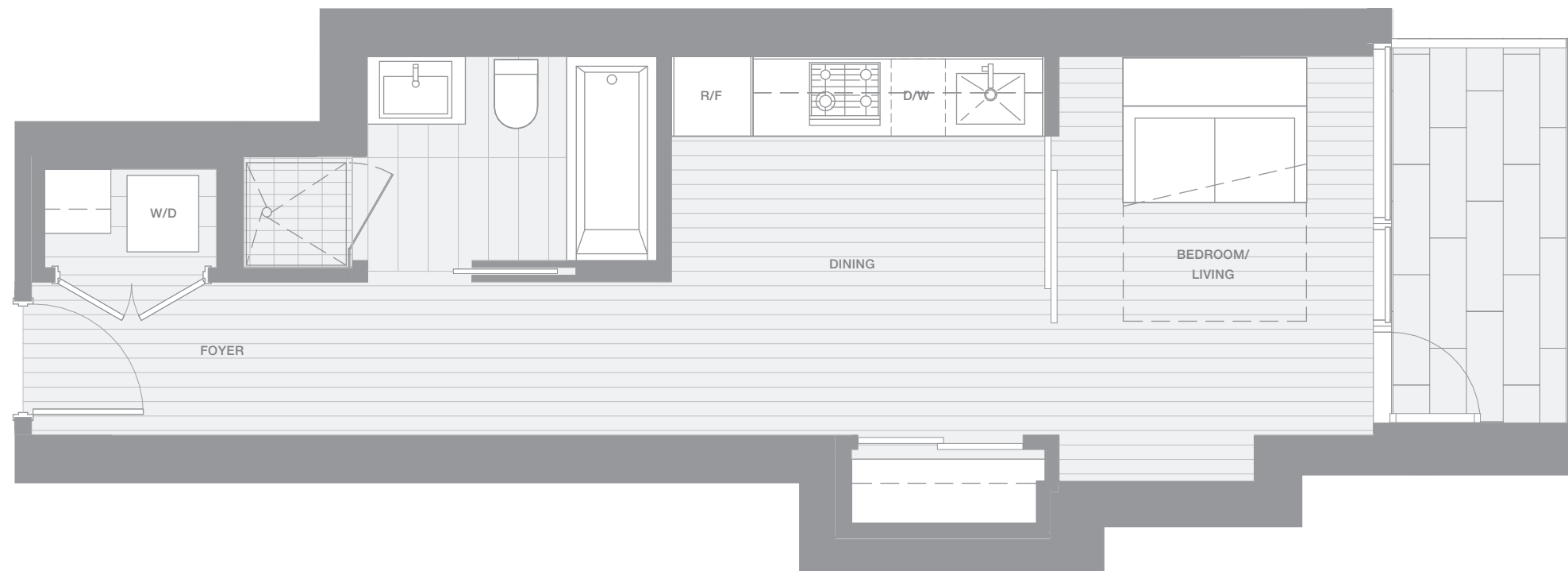
ONE BEDROOM FLEX

TOTAL LIVING 469 SQ FT

Indoor Living 415 sq ft

Outdoor Living 54 sq ft

This home with terrace boasts a bird's eye view of False Creek and an open concept, featuring a streamlined kitchen, four-piece bathroom and a flex space for living or sleeping, complete with a Murphy bed custom designed by BIG.



westbank

BIG

THERE ARE NO REPRESENTATIONS OR WARRANTIES HEREIN, MADE BY THE DEVELOPER, ITS AGENTS OR EMPLOYEES, OR ANY OTHER PERSON ON BEHALF OF THE DEVELOPER, OTHER THAN THOSE CONTAINED IN A CONTRACT OF PURCHASE AND SALE BETWEEN A PURCHASER AND THE DEVELOPER AND IN THE DISCLOSURE STATEMENT FOR THE DEVELOPMENT TO THE EXTENT MANDATED BY LAW. IN PARTICULAR, THE PURCHASER ACKNOWLEDGES AND AGREES THAT THE MATERIALS, SPECIFICATIONS, DETAILS, DIMENSIONS, LAYOUT AND FLOORPLANS SET OUT HEREIN OR OTHERWISE VIEWED BY THE PURCHASER ARE APPROXIMATE AND SUBJECT TO CHANGE WITHOUT NOTICE.

20140728

ARCHITECT
SERIES

4511

ONE BEDROOM FLEX

VANCOUVER
HOUSE