

VANCOUVER HOUSE

ARCHITECT SERIES

4506



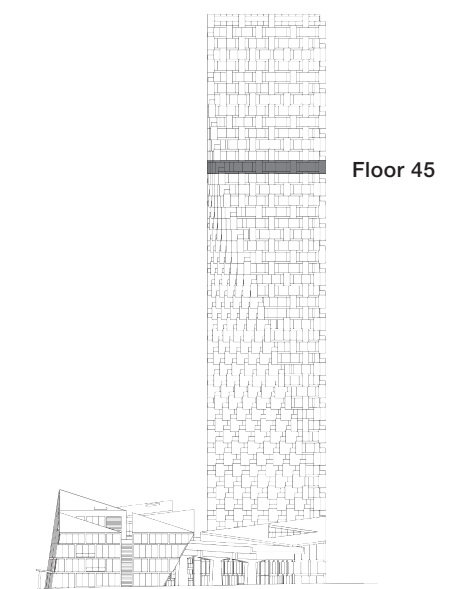
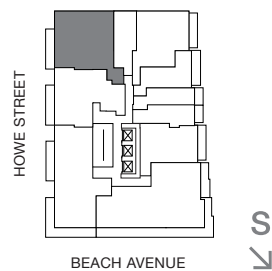
TWO BEDROOM & FAMILY ROOM

TOTAL LIVING 1459 SQ FT

Indoor Living 1333 sq ft

Outdoor Living 126 sq ft

This corner home boasts over 65 linear feet of floor-to-ceiling glazing capturing views from English Bay to the city skyline and the North Shore Mountains. The interior offers an open concept living and dining area, a kitchen with large island and a family room. The master bedroom has direct access to the terrace, as well as a spacious dressing room and a five-piece ensuite.



westbank

BIG

ARCHITECT
SERIES

4506

TWO BEDROOM & FAMILY ROOM

VANCOUVER
HOUSE