

VANCOUVER HOUSE

ARCHITECT SERIES

4505



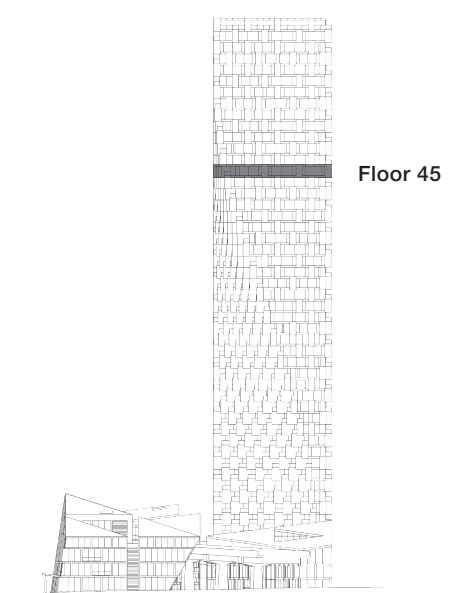
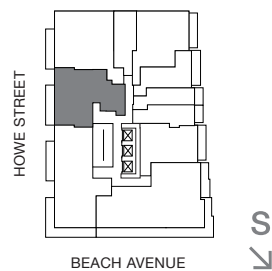
TWO BEDROOM & FAMILY ROOM

TOTAL LIVING 1290 SQ FT

Indoor Living 1164 sq ft

Outdoor Living 126 sq ft

A generous terrace along the frontage of this custom home offers views of English Bay and Stanley Park. The indoor living space is clearly delineated with a living and dining area for formal entertaining, and a recessed kitchen and family room. The master bedroom features a large dressing room and a five-piece ensuite with double sinks, as well as a walk-in shower and soaker tub.



westbank

BIG

ARCHITECT
SERIES

4505

TWO BEDROOM

VANCOUVER
HOUSE