

# VANCOUVER HOUSE

# ARCHITECT SERIES

# 4305



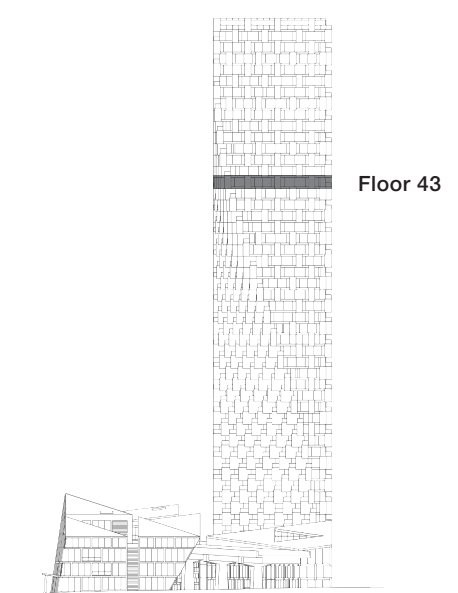
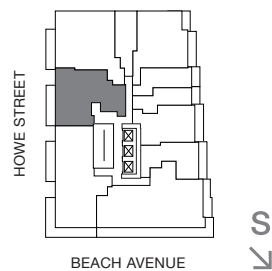
**TWO BEDROOM & FAMILY ROOM**

**TOTAL LIVING 1288 SQ FT**

Indoor Living 1162 sq ft

Outdoor Living 126 sq ft

This well-appointed home feels like a luxurious home in the sky with three distinct areas: a kitchen and family area that is perfect for intimate gatherings, the master bedroom wing complete with five-piece ensuite and walk-in closet, and the spacious living area. Enjoy the sunset over Point Grey, English Bay, and Stanley Park from the generous terrace, accessible from either the living area or the second bedroom.



westbank

BIG

ARCHITECT  
SERIES

4305

TWO BEDROOM & FAMILY ROOM

VANCOUVER  
HOUSE