

VANCOUVER HOUSE

ARCHITECT SERIES

4303



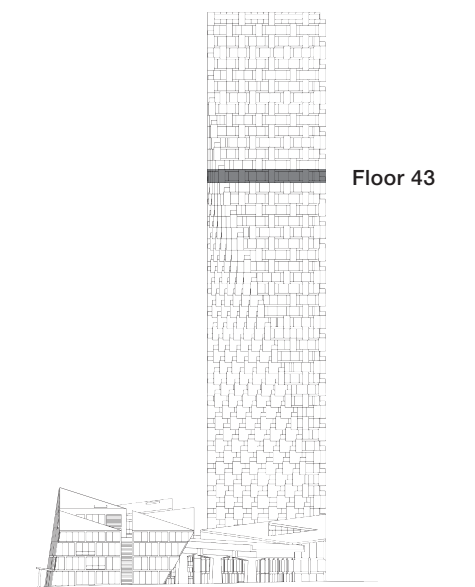
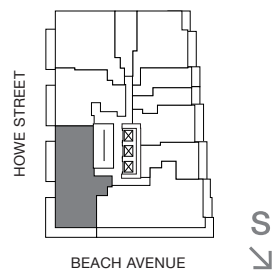
THREE BEDROOM & FAMILY ROOM

TOTAL LIVING 1969 SQ FT

Indoor Living 1570 sq ft

Outdoor Living 399 sq ft

This palatial corner abode embodies all the comforts of a home in the sky. Two bedrooms enjoy a private west-facing terrace while the master with ensuite offers a tranquil refuge. A wrap-around terrace embraces the living and dining area, offering panoramic views of Stanley Park, English Bay, Point Grey, and Granville Island. A family room off the dining area is ideal for intimate gatherings.



westbank

BIG

THERE ARE NO REPRESENTATIONS OR WARRANTIES HEREIN, MADE BY THE DEVELOPER, ITS AGENTS OR EMPLOYEES, OR ANY OTHER PERSON ON BEHALF OF THE DEVELOPER, OTHER THAN THOSE CONTAINED IN A CONTRACT OF PURCHASE AND SALE BETWEEN A PURCHASER AND THE DEVELOPER AND IN THE DISCLOSURE STATEMENT FOR THE DEVELOPMENT TO THE EXTENT MANDATED BY LAW. IN PARTICULAR, THE PURCHASER ACKNOWLEDGES AND AGREES THAT THE MATERIALS, SPECIFICATIONS, DETAILS, DIMENSIONS, LAYOUT AND FLOORPLANS SET OUT HEREIN OR OTHERWISE VIEWED BY THE PURCHASER ARE APPROXIMATE AND SUBJECT TO CHANGE WITHOUT NOTICE.

20140728

ARCHITECT
SERIES

4303

THREE BEDROOM & FAMILY ROOM

VANCOUVER
HOUSE