

# VANCOUVER HOUSE

# ARCHITECT SERIES

# 4209



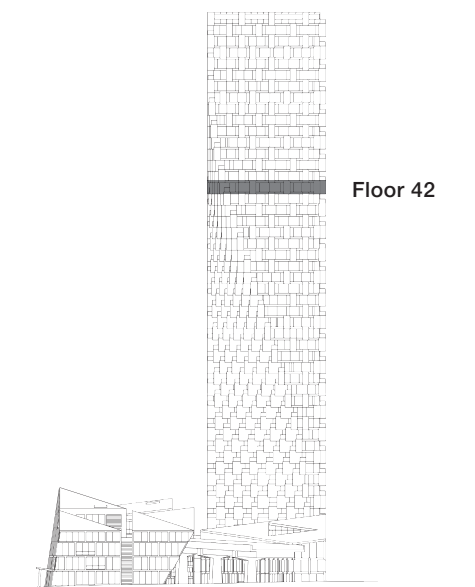
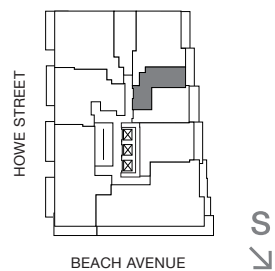
**ONE BEDROOM FLEX**

**TOTAL LIVING 532 SQ FT**

Indoor Living 478 sq ft

Outdoor Living 54 sq ft

This charming space is a unique pied-à-terre with views of False Creek and the city. Morning light fills the bedroom and living area, which opens onto a generous copper-clad balcony. Space is amplified by a sleek layout and a Murphy bed custom-designed by BIG.



westbank

**BIG**

THERE ARE NO REPRESENTATIONS OR WARRANTIES HEREIN, MADE BY THE DEVELOPER, ITS AGENTS OR EMPLOYEES, OR ANY OTHER PERSON ON BEHALF OF THE DEVELOPER, OTHER THAN THOSE CONTAINED IN A CONTRACT OF PURCHASE AND SALE BETWEEN A PURCHASER AND THE DEVELOPER AND IN THE DISCLOSURE STATEMENT FOR THE DEVELOPMENT TO THE EXTENT MANDATED BY LAW. IN PARTICULAR, THE PURCHASER ACKNOWLEDGES AND AGREES THAT THE MATERIALS, SPECIFICATIONS, DETAILS, DIMENSIONS, LAYOUT AND FLOORPLANS SET OUT HEREIN OR OTHERWISE VIEWED BY THE PURCHASER ARE APPROXIMATE AND SUBJECT TO CHANGE WITHOUT NOTICE.

20140728

ARCHITECT  
SERIES

4209

ONE BEDROOM FLEX

VANCOUVER  
HOUSE