

# VANCOUVER HOUSE

# ARCHITECT SERIES

# 4208

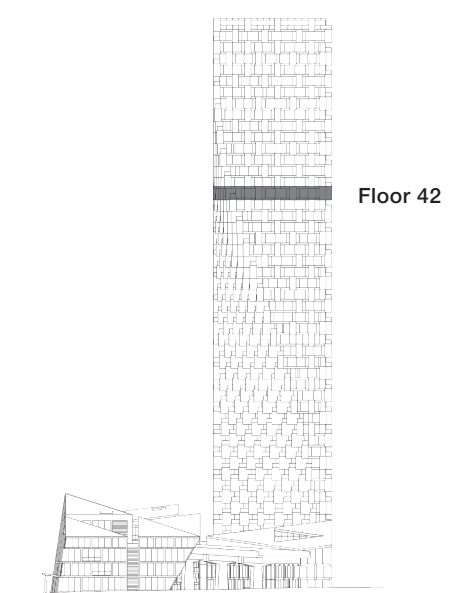
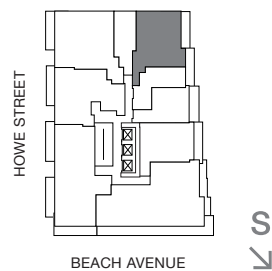
**TWO BEDROOM**

**TOTAL LIVING 1208 SQ FT**

Indoor Living 1028 sq ft

Outdoor Living 180 sq ft

This splendid home offers views of False Creek, the city, and beyond to Mount Baker. Two generous copper-clad balconies and floor-to-ceiling glazing flood the interiors with morning light. One terrace spans the length of the living area and second bedroom, with another more private terrace accessible from the master bedroom.



westbank **BIG**

THERE ARE NO REPRESENTATIONS OR WARRANTIES HEREIN, MADE BY THE DEVELOPER, ITS AGENTS OR EMPLOYEES, OR ANY OTHER PERSON ON BEHALF OF THE DEVELOPER, OTHER THAN THOSE CONTAINED IN A CONTRACT OF PURCHASE AND SALE BETWEEN A PURCHASER AND THE DEVELOPER AND IN THE DISCLOSURE STATEMENT FOR THE DEVELOPMENT TO THE EXTENT MANDATED BY LAW. IN PARTICULAR, THE PURCHASER ACKNOWLEDGES AND AGREES THAT THE MATERIALS, SPECIFICATIONS, DETAILS, DIMENSIONS, LAYOUT AND FLOORPLANS SET OUT HEREIN OR OTHERWISE VIEWED BY THE PURCHASER ARE APPROXIMATE AND SUBJECT TO CHANGE WITHOUT NOTICE.

ARCHITECT  
SERIES

4208

TWO BEDROOM & FAMILY ROOM

VANCOUVER  
HOUSE