

VANCOUVER HOUSE

ARCHITECT SERIES

4105



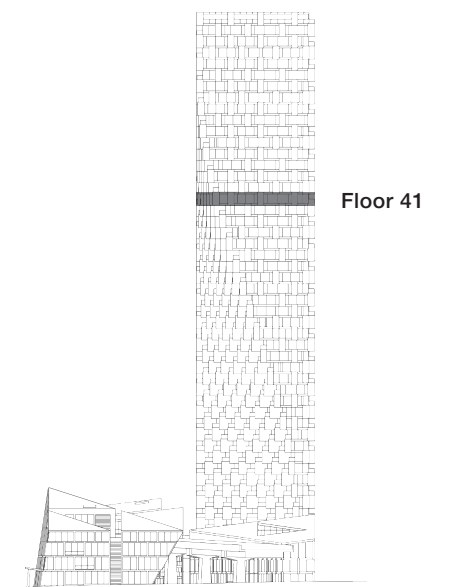
TWO BEDROOM & FAMILY ROOM

TOTAL LIVING 1285 SQ FT

Indoor Living 1160 sq ft

Outdoor Living 125 sq ft

This well-appointed home feels like a palace in the sky, with three distinct areas. The kitchen and family area are perfect for intimate gatherings, and the master bedroom and ensuite wing are complete with enhanced privacy wall, while the open-concept living and dining area flows onto a generous west-facing balcony with views of Point Grey, English Bay, and Stanley Park.



westbank

BIG

ARCHITECT
SERIES

4105

TWO BEDROOM & FAMILY ROOM

VANCOUVER
HOUSE