

VANCOUVER HOUSE

ARCHITECT SERIES

4103



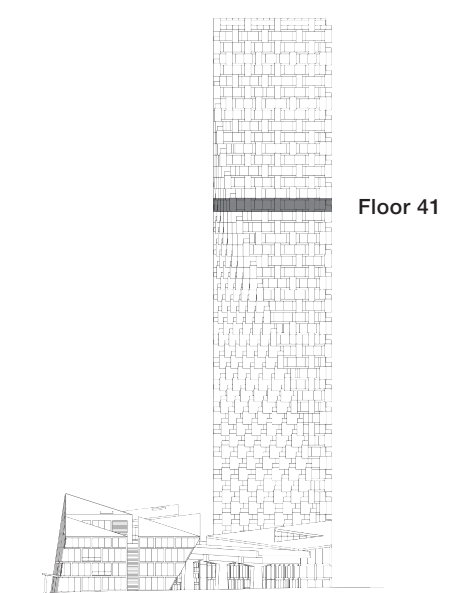
THREE BEDROOM & FAMILY ROOM

TOTAL LIVING 1975 SQ FT

Indoor Living 1570 sq ft

Outdoor Living 405 sq ft

This palatial corner abode embodies all the comforts of a home in the sky. The master and second bedrooms share a west-facing terrace, while west and south facing terraces extend the open-concept living, dining, and kitchen area. Enjoy panoramic views of Stanley Park, English Bay, Point Grey, and Granville Island. A family area for intimate gatherings makes this home ideal for entertaining.



westbank

BIG

ARCHITECT
SERIES

4103

THREE BEDROOM & FAMILY ROOM

VANCOUVER
HOUSE