

VANCOUVER HOUSE

ARCHITECT SERIES

4005



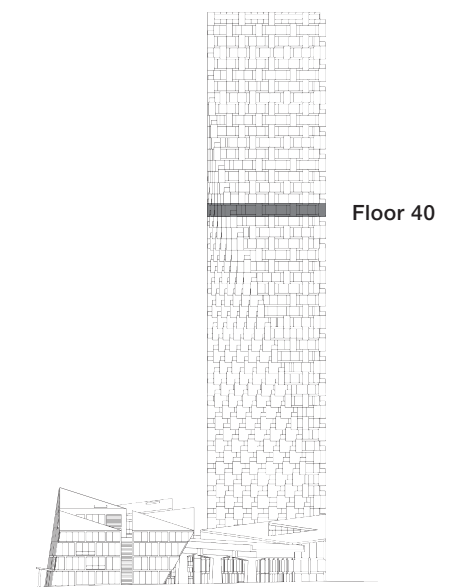
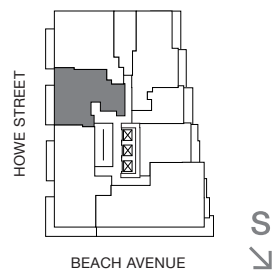
TWO BEDROOM & FAMILY ROOM

TOTAL LIVING 1288 SQ FT

Indoor Living 1162 sq ft

Outdoor Living 126 sq ft

This grand home offers luxurious comforts. Three distinct areas include a kitchen and dining area perfect for gourmet entertaining, a master bedroom and five-piece ensuite wing, and a second bedroom and living area which share access to a generous west-facing balcony showcasing views of Point Grey and English Bay.



westbank

BIG

ARCHITECT
SERIES

4005

TWO BEDROOM & FAMILY ROOM

VANCOUVER
HOUSE