

# VANCOUVER HOUSE

# ARCHITECT SERIES

# 4003



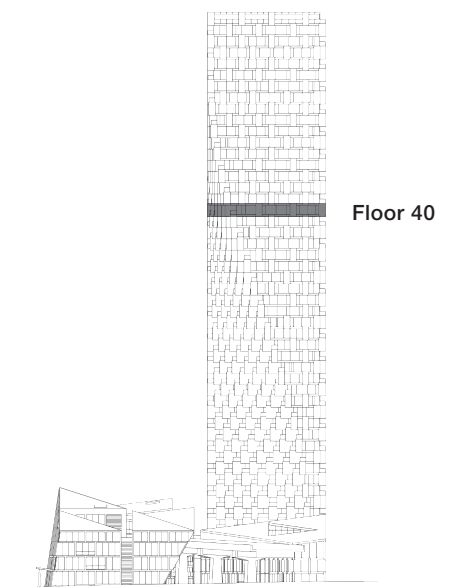
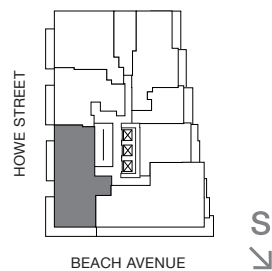
**THREE BEDROOM & FAMILY ROOM**

**TOTAL LIVING 1983 SQ FT**

Indoor Living 1583 sq ft

Outdoor Living 400 sq ft

This palatial corner abode embodies all the comforts of home in the sky. Two bedrooms enjoy a private west-facing terrace, while the master bedroom with large closet and four-piece ensuite is tucked away for privacy. A wrap-around terrace embraces the living, dining, and kitchen area, offering panoramic views of English Bay, Point Grey, and Granville Island.



westbank

BIG

ARCHITECT  
SERIES

4003

THREE BEDROOM & FAMILY ROOM

VANCOUVER  
HOUSE