

VANCOUVER HOUSE

ARCHITECT SERIES

3906



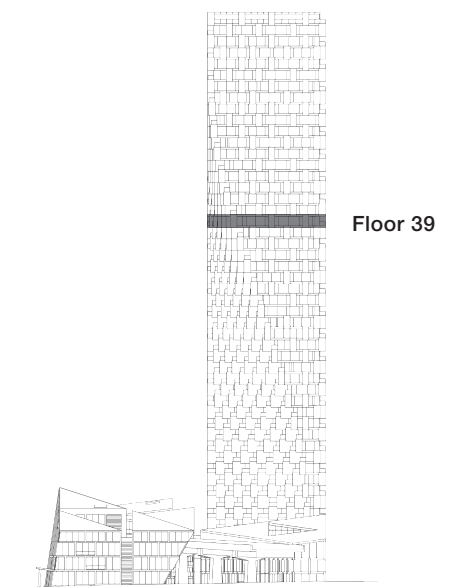
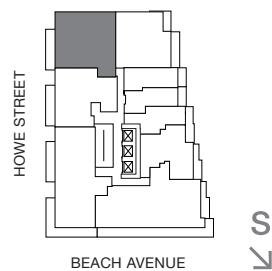
TWO BEDROOM & FAMILY ROOM

TOTAL LIVING 1406 SQ FT

Indoor Living 1280 sq ft

Outdoor Living 126 sq ft

This magnificent corner home features a welcoming gallery foyer that is the perfect place to display art and mementos. The kitchen and dining area opens onto a generous copper-clad terrace with views of English Bay, Point Grey, and Stanley Park. The master bedroom is designed to be an idyllic retreat with five-piece ensuite, walk-in closet, and private terrace access. Just off the living room, the family room is ideal for intimate gatherings and city views.



westbank

BIG

ARCHITECT
SERIES

3906

TWO BEDROOM & FAMILY ROOM

VANCOUVER
HOUSE