

VANCOUVER HOUSE

ARCHITECT SERIES

3903



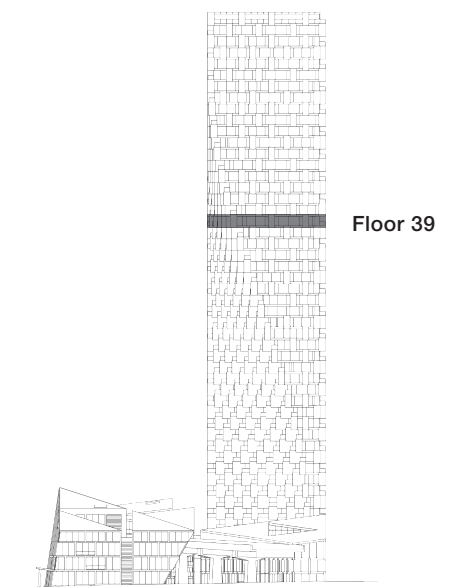
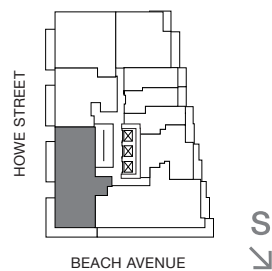
THREE BEDROOM & FAMILY ROOM

TOTAL LIVING 1969 SQ FT

Indoor Living 1570 sq ft

Outdoor Living 399 sq ft

This palatial corner home embodies all the comforts of an oasis in the sky. A long gallery entrance foyer is the perfect place to display art, while a master bedroom with four-piece ensuite is sequestered for privacy. Two bedrooms enjoy a private west-facing terrace. A wrap-around west and south-facing terrace embraces the living and dining area allowing for panoramic views of Stanley Park, English Bay, Point Grey and Granville Island.



westbank

BIG

ARCHITECT
SERIES

3903

THREE BEDROOM & FAMILY ROOM

VANCOUVER
HOUSE