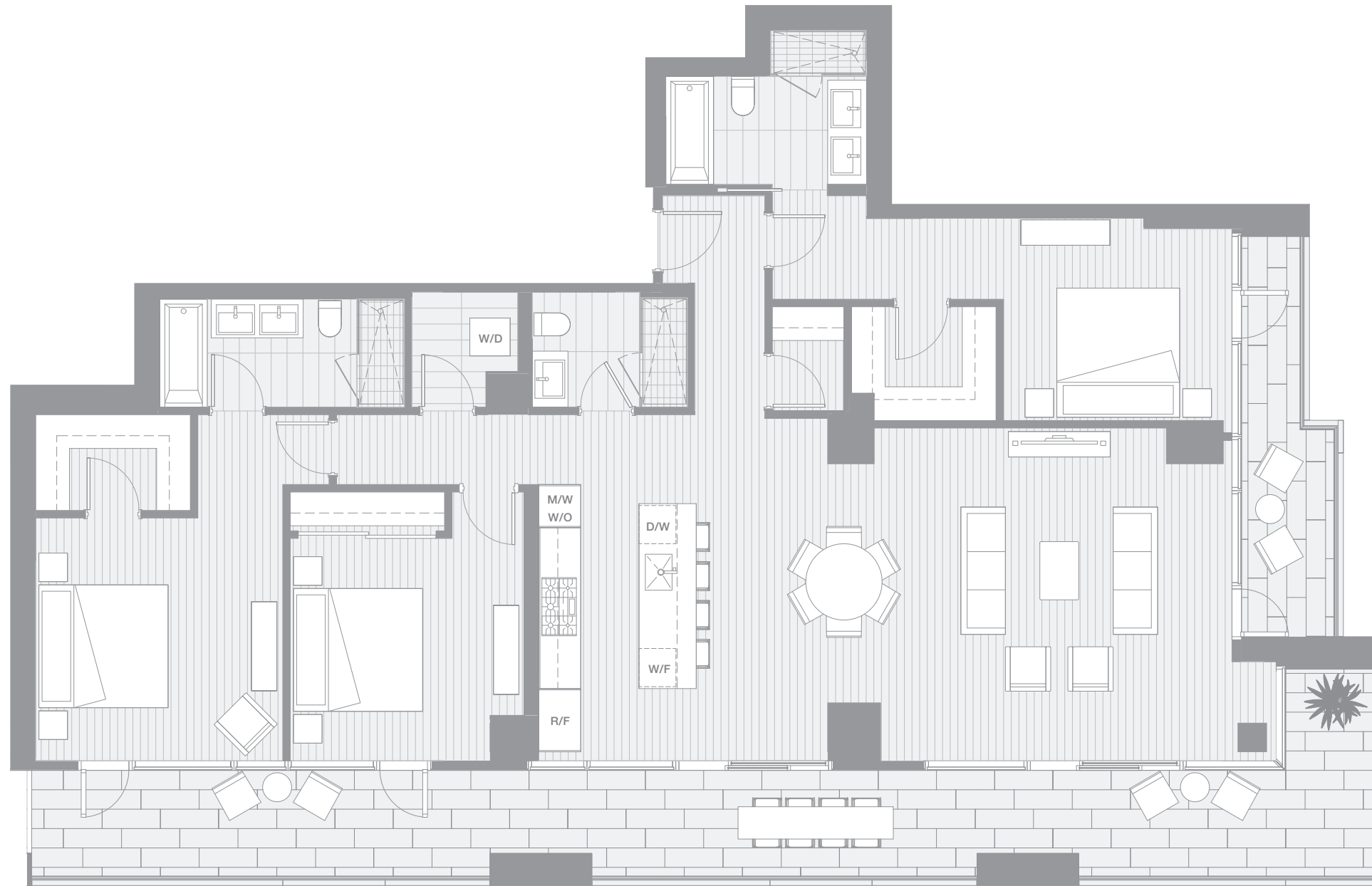


VANCOUVER HOUSE

ARCHITECT SERIES

3902



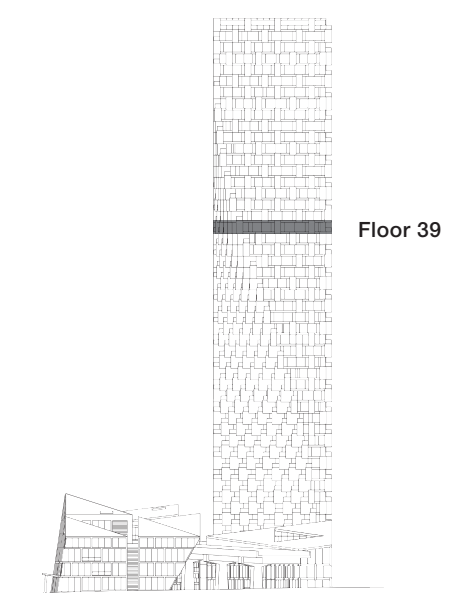
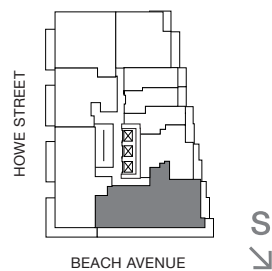
THREE BEDROOM

TOTAL LIVING 2307 SQ FT

Indoor Living 1757 sq ft

Outdoor Living 550 sq ft

An amazing terrace that stretches the length of the home, this space offers panoramic south and east views spanning from Granville Island to David Lam Park. Combined with a welcoming living and dining area, this is the ideal place for entertaining and intimate gatherings.



westbank

BIG

THERE ARE NO REPRESENTATIONS OR WARRANTIES HEREIN, MADE BY THE DEVELOPER, ITS AGENTS OR EMPLOYEES, OR ANY OTHER PERSON ON BEHALF OF THE DEVELOPER, OTHER THAN THOSE CONTAINED IN A CONTRACT OF PURCHASE AND SALE BETWEEN A PURCHASER AND THE DEVELOPER AND IN THE DISCLOSURE STATEMENT FOR THE DEVELOPMENT TO THE EXTENT MANDATED BY LAW. IN PARTICULAR, THE PURCHASER ACKNOWLEDGES AND AGREES THAT THE MATERIALS, SPECIFICATIONS, DETAILS, DIMENSIONS, LAYOUT AND FLOORPLANS SET OUT HEREIN OR OTHERWISE VIEWED BY THE PURCHASER ARE APPROXIMATE AND SUBJECT TO CHANGE WITHOUT NOTICE.

20140728

ARCHITECT
SERIES

3902

THREE BEDROOM

VANCOUVER
HOUSE