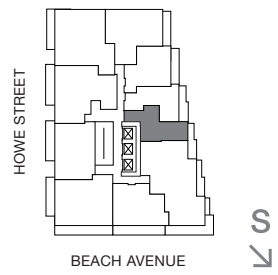


# VANCOUVER HOUSE

# ARCHITECT SERIES

# 3811



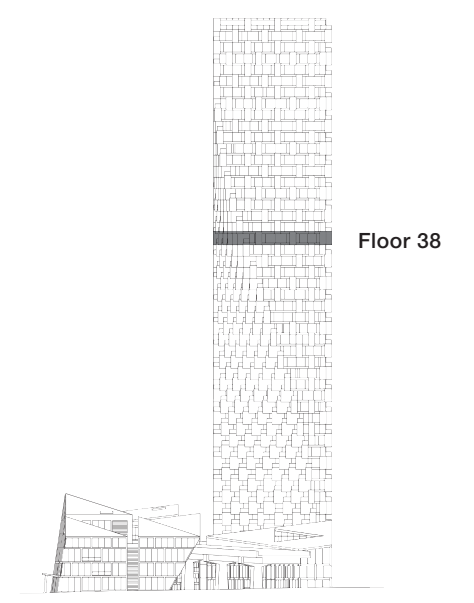
**ONE BEDROOM FLEX**

**TOTAL LIVING 574 SQ FT**

Indoor Living 527 sq ft

Outdoor Living 47 sq ft

This charming home features views of False Creek and the city. From the spacious copper-clad balcony, morning light fills the bedroom and living area. Space is amplified by a streamlined layout and a Murphy bed custom designed by BIG.



westbank **BIG**

THERE ARE NO REPRESENTATIONS OR WARRANTIES HEREIN, MADE BY THE DEVELOPER, ITS AGENTS OR EMPLOYEES, OR ANY OTHER PERSON ON BEHALF OF THE DEVELOPER, OTHER THAN THOSE CONTAINED IN A CONTRACT OF PURCHASE AND SALE BETWEEN A PURCHASER AND THE DEVELOPER AND IN THE DISCLOSURE STATEMENT FOR THE DEVELOPMENT TO THE EXTENT MANDATED BY LAW. IN PARTICULAR, THE PURCHASER ACKNOWLEDGES AND AGREES THAT THE MATERIALS, SPECIFICATIONS, DETAILS, DIMENSIONS, LAYOUT AND FLOORPLANS SET OUT HEREIN OR OTHERWISE VIEWED BY THE PURCHASER ARE APPROXIMATE AND SUBJECT TO CHANGE WITHOUT NOTICE.

ARCHITECT  
SERIES

3811

ONE BEDROOM FLEX

VANCOUVER  
HOUSE