

# VANCOUVER HOUSE

# ARCHITECT SERIES

# 3709



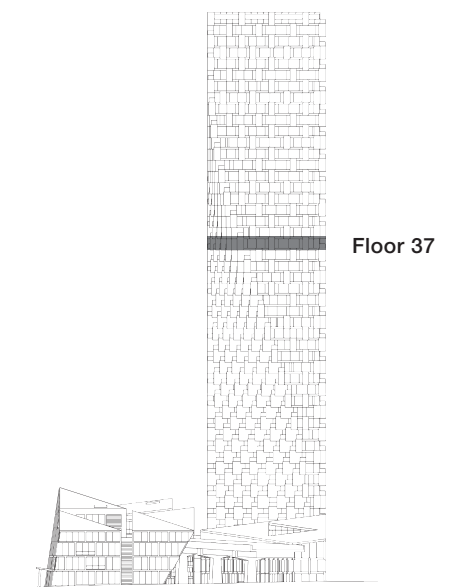
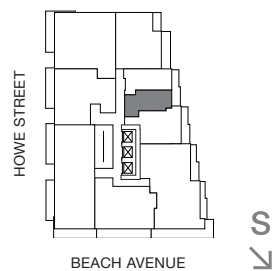
**ONE BEDROOM FLEX**

**TOTAL LIVING 424 SQ FT**

Indoor Living 367 sq ft

Outdoor Living 57 sq ft

This charming home features views of False Creek and the city. A generous copper-clad terrace allows for morning light in the bedroom and living area. The streamlined layout and custom Murphy bed designed by BIG amplifies the space.



westbank

**BIG**

THERE ARE NO REPRESENTATIONS OR WARRANTIES HEREIN, MADE BY THE DEVELOPER, ITS AGENTS OR EMPLOYEES, OR ANY OTHER PERSON ON BEHALF OF THE DEVELOPER, OTHER THAN THOSE CONTAINED IN A CONTRACT OF PURCHASE AND SALE BETWEEN A PURCHASER AND THE DEVELOPER AND IN THE DISCLOSURE STATEMENT FOR THE DEVELOPMENT TO THE EXTENT MANDATED BY LAW. IN PARTICULAR, THE PURCHASER ACKNOWLEDGES AND AGREES THAT THE MATERIALS, SPECIFICATIONS, DETAILS, DIMENSIONS, LAYOUT AND FLOORPLANS SET OUT HEREIN OR OTHERWISE VIEWED BY THE PURCHASER ARE APPROXIMATE AND SUBJECT TO CHANGE WITHOUT NOTICE.

2014/07/28

ARCHITECT  
SERIES

3709

ONE BEDROOM FLEX

VANCOUVER  
HOUSE