

VANCOUVER HOUSE

ARCHITECT SERIES

3708



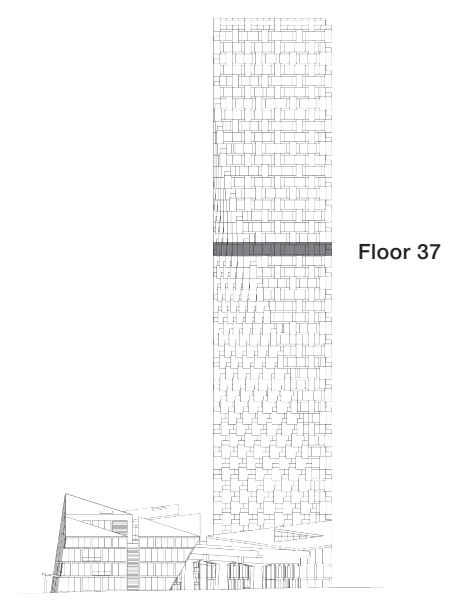
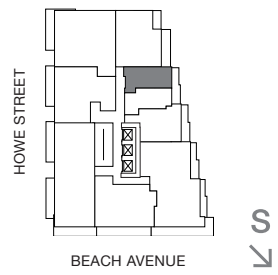
ONE BEDROOM FLEX

TOTAL LIVING 426 SQ FT

Indoor Living 373 sq ft

Outdoor Living 53 sq ft

This charming home features views of False Creek and the city. Morning light fills the bedroom and living area that opens onto a generous copper-clad balcony. Space is amplified by a streamlined layout and a Murphy bed custom designed by BIG.



westbank **BIG**

THERE ARE NO REPRESENTATIONS OR WARRANTIES HEREIN, MADE BY THE DEVELOPER, ITS AGENTS OR EMPLOYEES, OR ANY OTHER PERSON ON BEHALF OF THE DEVELOPER, OTHER THAN THOSE CONTAINED IN A CONTRACT OF PURCHASE AND SALE BETWEEN A PURCHASER AND THE DEVELOPER AND IN THE DISCLOSURE STATEMENT FOR THE DEVELOPMENT TO THE EXTENT MANDATED BY LAW. IN PARTICULAR, THE PURCHASER ACKNOWLEDGES AND AGREES THAT THE MATERIALS, SPECIFICATIONS, DETAILS, DIMENSIONS, LAYOUT AND FLOORPLANS SET OUT HEREIN OR OTHERWISE VIEWED BY THE PURCHASER ARE APPROXIMATE AND SUBJECT TO CHANGE WITHOUT NOTICE.

ARCHITECT
SERIES

3708

ONE BEDROOM FLEX

VANCOUVER
HOUSE