

VANCOUVER HOUSE

ARCHITECT SERIES

3703



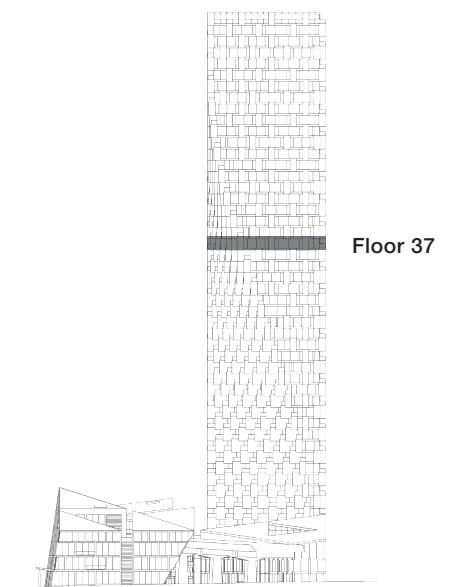
THREE BEDROOM

TOTAL LIVING 1871 SQ FT

Indoor Living 1467 sq ft

Outdoor Living 404 sq ft

This palatial corner home boasts panoramic city views of False Creek, English Bay, Point Grey, Granville Island, and Mount Baker. The generous interiors are augmented by three copper-clad terraces. The south-facing balcony embraces the living, dining, and kitchen area, which also enjoys a western terrace, while the master and second bedroom share a generous balcony, each with private access.



westbank

BIG

ARCHITECT
SERIES

3703

THREE BEDROOM

VANCOUVER
HOUSE