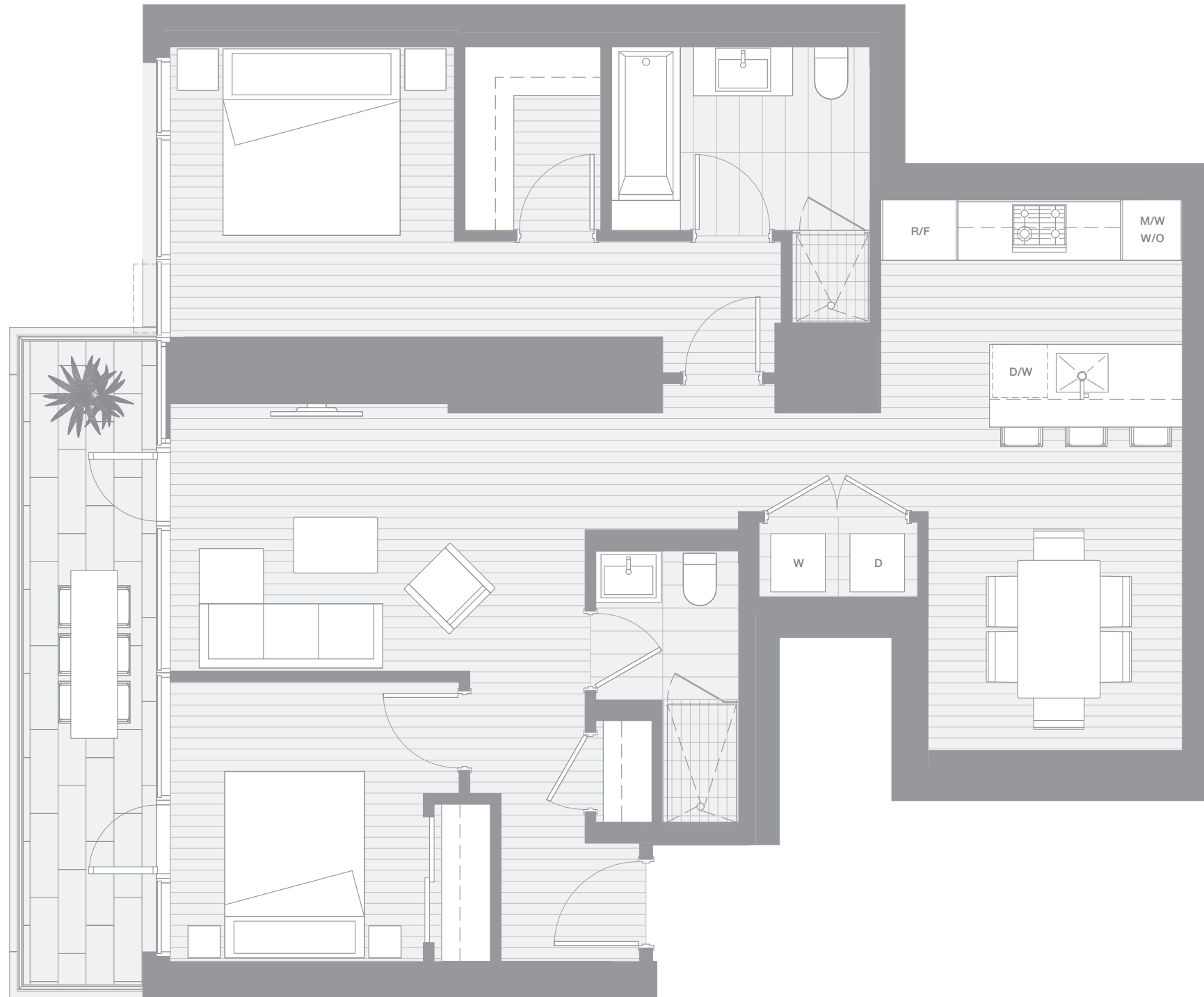


VANCOUVER HOUSE

ARCHITECT SERIES

3605



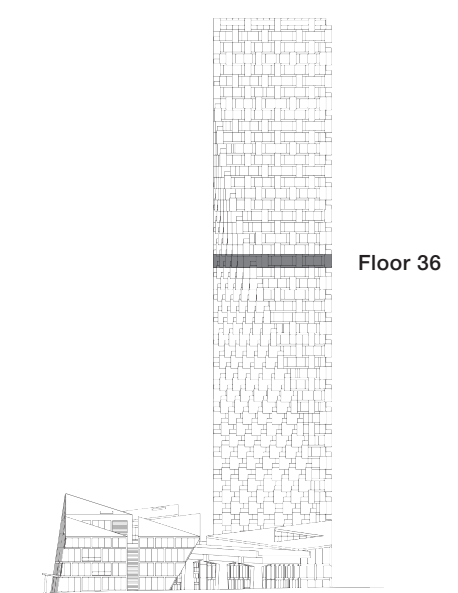
TWO BEDROOM

TOTAL LIVING 1175 SQ FT

Indoor Living 1049 sf

Outdoor Living 126 sf

This thoughtfully planned home reads like a house in the sky. It is organized into three distinct areas: the kitchen and dining area is perfect for gourmet entertaining, a private master bedroom and ensuite wing with an enhanced privacy wall, and the second bedroom and living area which shares access to a generous west-facing balcony taking in views of Point Grey and English Bay.



westbank

BIG

ARCHITECT
SERIES

3605

TWO BEDROOM

VANCOUVER
HOUSE