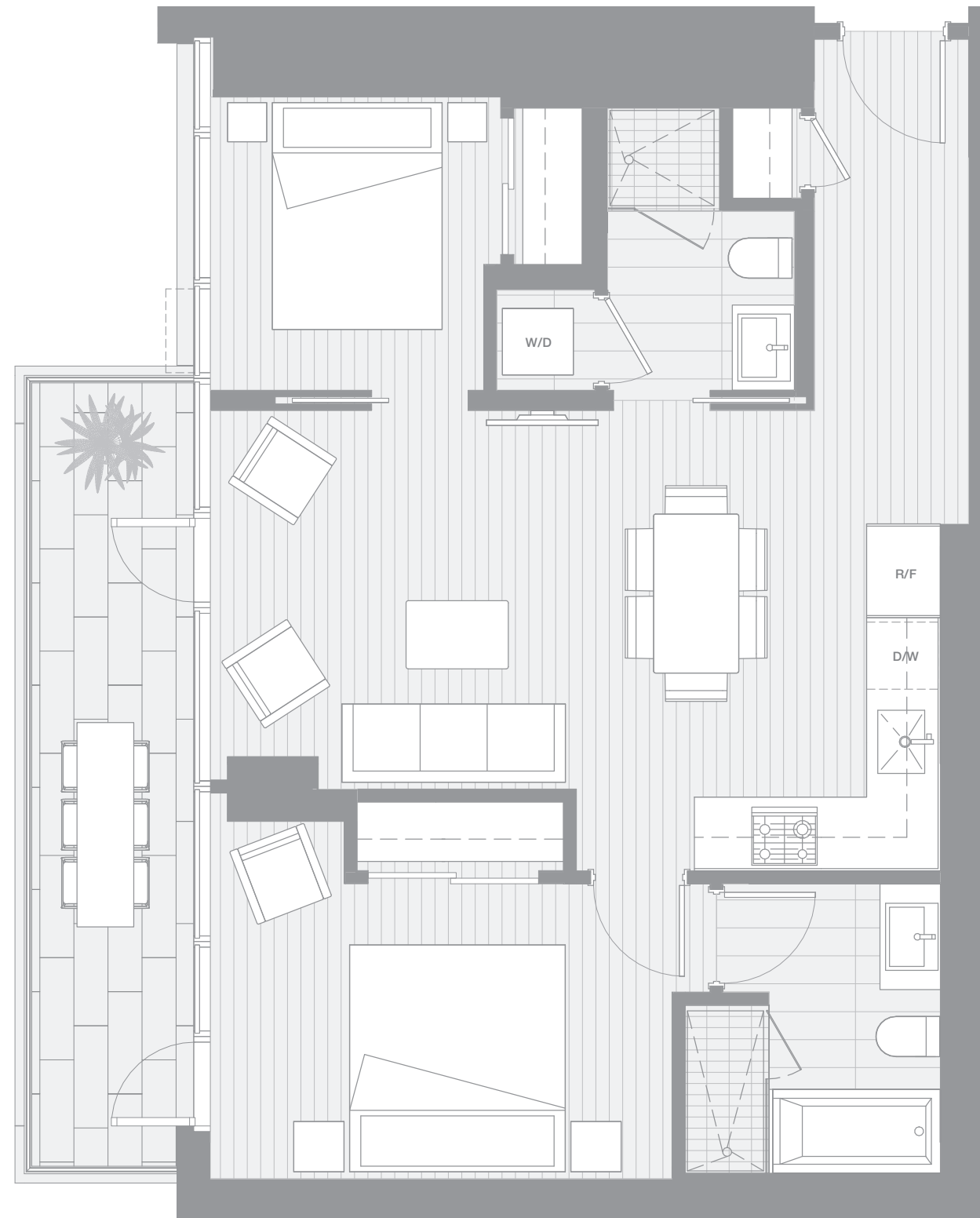


VANCOUVER HOUSE

ARCHITECT SERIES

3603



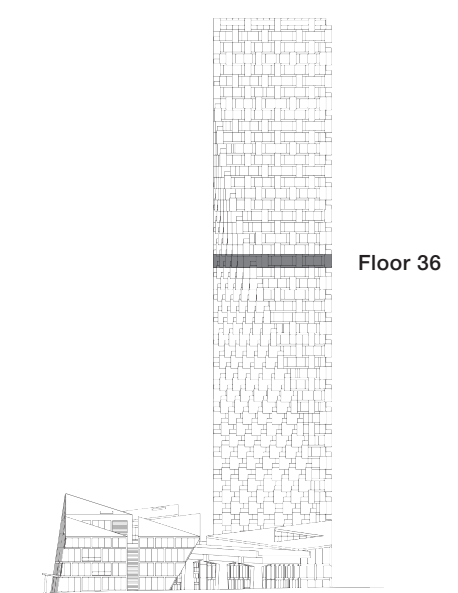
TWO BEDROOM

TOTAL LIVING 933 SQ FT

Indoor Living 807 sq ft

Outdoor Living 126 sq ft

This thoughtfully planned home brings views of English Bay and Point Grey with a generous west-facing terrace embracing both the master bedroom, and the open-concept living area. A long gallery foyer is the perfect play to display art.



westbank

BIG

ARCHITECT
SERIES

3603

TWO BEDROOM

VANCOUVER
HOUSE