

VANCOUVER HOUSE

ARCHITECT SERIES

3505



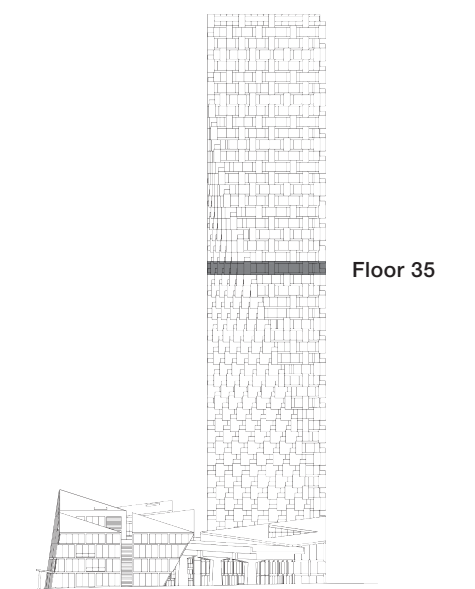
TWO BEDROOM

TOTAL LIVING 1202 SQ FT

Indoor Living 1076 sq ft

Outdoor Living 126 sq ft

This lovely home enjoys west-facing views of English Bay from the living area, master, and second bedrooms. The living area and second bedroom access the generous terrace, ideal for outdoor entertaining.



westbank

BIG

ARCHITECT
SERIES

3505

TWO BEDROOM

VANCOUVER
HOUSE