

# VANCOUVER HOUSE

# ARCHITECT SERIES

# 3503



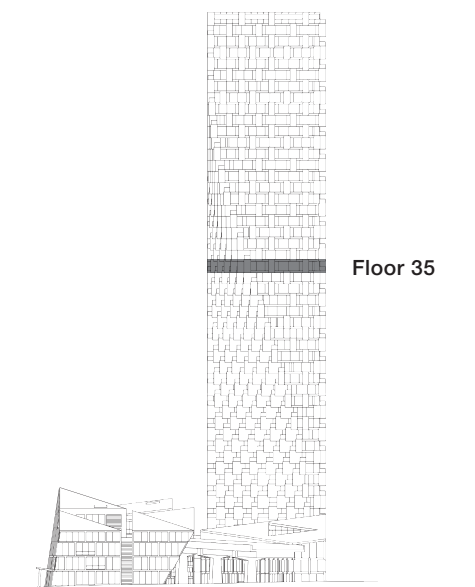
**THREE BEDROOM**

**TOTAL LIVING 1839 SQ FT**

Indoor Living 1440 sq ft

Outdoor Living 399 sq ft

This palatial corner home offers the best of indoor and outdoor living, with a generous wrap-around terrace facing south and west, and a panoramic view of Granville Island and False Creek. The open living and kitchen area enjoys both exposures, while two bedrooms boast a private western terrace.



westbank

**BIG**

ARCHITECT  
SERIES

3503

THREE BEDROOM

VANCOUVER  
HOUSE