

# VANCOUVER HOUSE

# ARCHITECT SERIES

# 3502



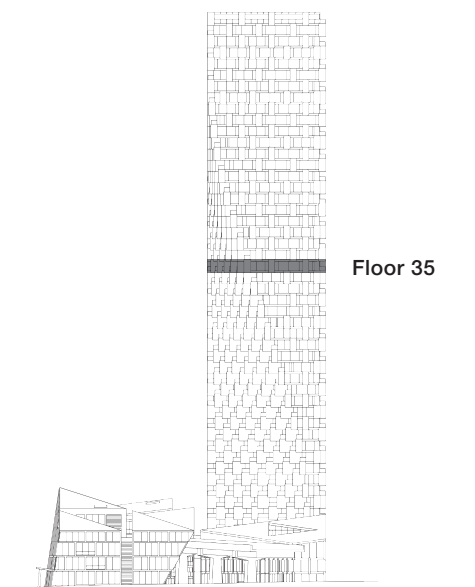
**TWO BEDROOM**

**TOTAL LIVING 1156 SQ FT**

Indoor Living 962 sq ft

Outdoor Living 194 sq ft

This sunny abode is designed to showcase the southern exposure. The expansive terrace boasts a view of Granville Island and its marinas. The luxurious master bedroom and ensuite, the second bedroom, and the open-concept living, dining, and kitchen area, all take in the colourful vista.



westbank

**BIG**

THERE ARE NO REPRESENTATIONS OR WARRANTIES HEREIN, MADE BY THE DEVELOPER, ITS AGENTS OR EMPLOYEES, OR ANY OTHER PERSON ON BEHALF OF THE DEVELOPER, OTHER THAN THOSE CONTAINED IN A CONTRACT OF PURCHASE AND SALE BETWEEN A PURCHASER AND THE DEVELOPER AND IN THE DISCLOSURE STATEMENT FOR THE DEVELOPMENT TO THE EXTENT MANDATED BY LAW. IN PARTICULAR, THE PURCHASER ACKNOWLEDGES AND AGREES THAT THE MATERIALS, SPECIFICATIONS, DETAILS, DIMENSIONS, LAYOUT AND FLOORPLANS SET OUT HEREIN OR OTHERWISE VIEWED BY THE PURCHASER ARE APPROXIMATE AND SUBJECT TO CHANGE WITHOUT NOTICE.

20140728

ARCHITECT  
SERIES

3502

TWO BEDROOM

VANCOUVER  
HOUSE