

VANCOUVER HOUSE

ARCHITECT SERIES

3309



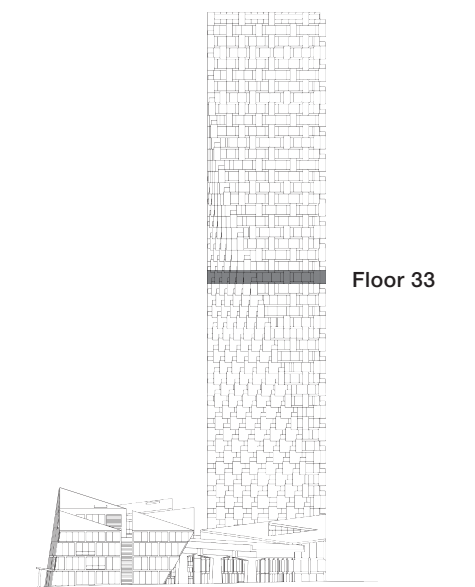
ONE BEDROOM

TOTAL LIVING 591 SQ FT

Indoor Living 493 sq ft

Outdoor Living 98 sq ft

This home offers the ideal entertaining space with an open-concept living, dining, and kitchen area opening onto a balcony with views of False Creek and David Lam Park. The bedroom shares access to the terrace and similar vistas.



westbank

BIG

THERE ARE NO REPRESENTATIONS OR WARRANTIES HEREIN, MADE BY THE DEVELOPER, ITS AGENTS OR EMPLOYEES, OR ANY OTHER PERSON ON BEHALF OF THE DEVELOPER, OTHER THAN THOSE CONTAINED IN A CONTRACT OF PURCHASE AND SALE BETWEEN A PURCHASER AND THE DEVELOPER AND IN THE DISCLOSURE STATEMENT FOR THE DEVELOPMENT TO THE EXTENT MANDATED BY LAW. IN PARTICULAR, THE PURCHASER ACKNOWLEDGES AND AGREES THAT THE MATERIALS, SPECIFICATIONS, DETAILS, DIMENSIONS, LAYOUT AND FLOORPLANS SET OUT HEREIN OR OTHERWISE VIEWED BY THE PURCHASER ARE APPROXIMATE AND SUBJECT TO CHANGE WITHOUT NOTICE.

ARCHITECT
SERIES

3309

ONE BEDROOM

VANCOUVER
HOUSE