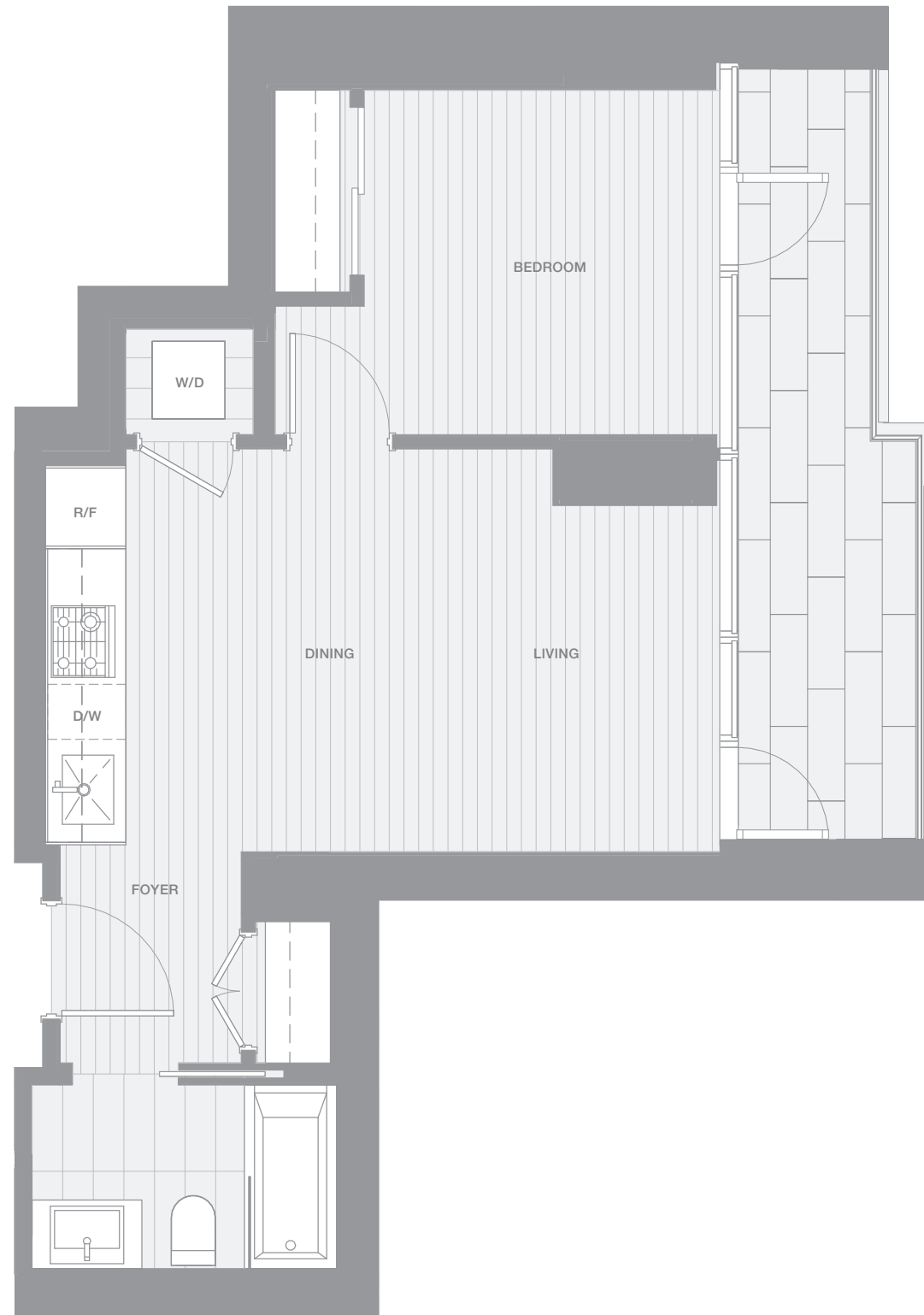


VANCOUVER HOUSE

ARCHITECT SERIES

3308



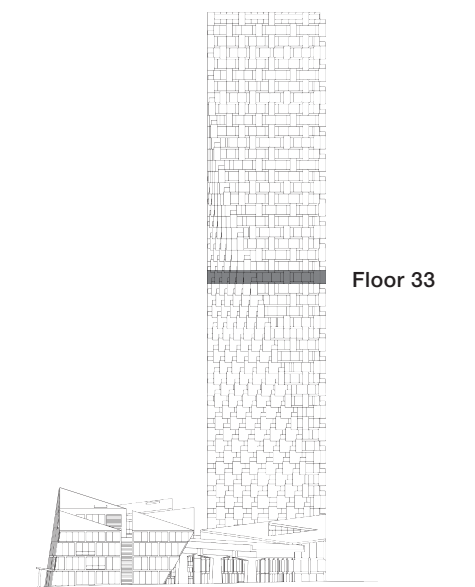
ONE BEDROOM

TOTAL LIVING 584 SQ FT

Indoor Living 480 sq ft

Outdoor Living 104 sq ft

The open-concept living, dining, and kitchen area opens onto the generous terrace, providing an ideal space for entertaining. The bedroom shares access to the terrace which enjoys views of False Creek and David Lam Park.



westbank

BIG

ARCHITECT
SERIES

3308

ONE BEDROOM

VANCOUVER
HOUSE