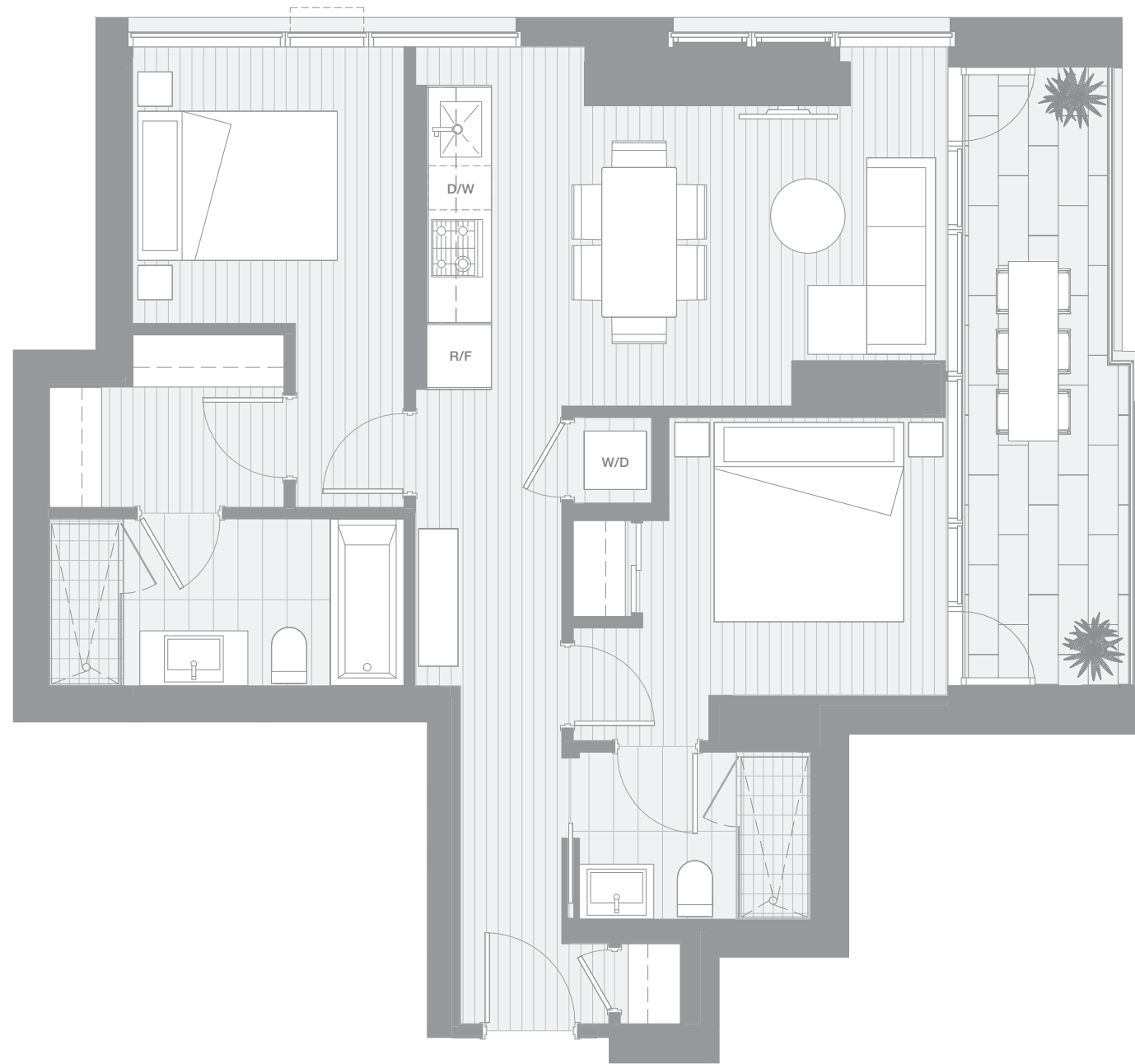


VANCOUVER HOUSE

ARCHITECT SERIES

3307



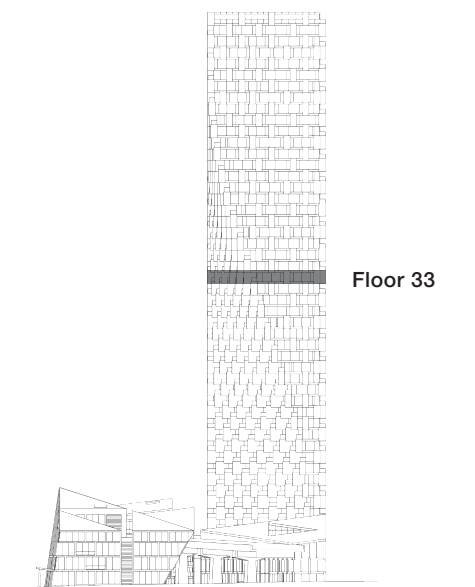
TWO BEDROOM

TOTAL LIVING 916 SQ FT

Indoor Living 791 sq ft

Outdoor Living 125 sq ft

This magnificent home boasts city views, overlooking False Creek and David Lam Park. A long entrance foyer, perfect for displaying art, leads into a living, dining, and kitchen area that shares access to a generous terrace with the second bedroom. Retreat to the master bedroom suite complete with walk-in closet and four-piece ensuite.



westbank

BIG

ARCHITECT
SERIES

3307

TWO BEDROOM

VANCOUVER
HOUSE