

# VANCOUVER HOUSE

# ARCHITECT SERIES 3306



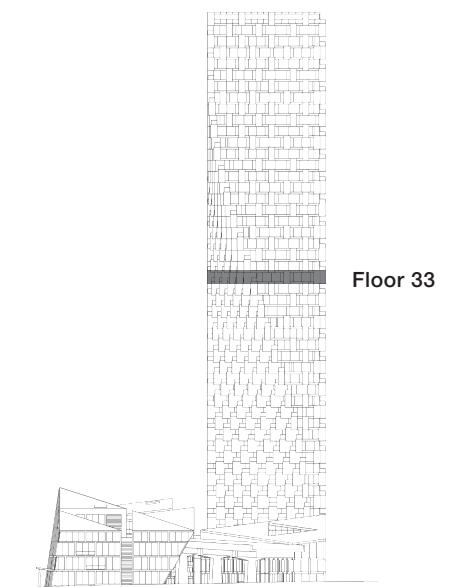
**TWO BEDROOM**

**TOTAL LIVING 1101 SQ FT**

Indoor Living 976 sq ft

Outdoor Living 125 sq ft

This lovely corner home boasts views of English Bay and Stanley Park. A generous west-facing terrace spans the length of the open-concept living and dining area, while a separate master bedroom and ensuite offers a more private retreat. A long gallery foyer provides the perfect space for displaying art.



westbank

**BIG**

THERE ARE NO REPRESENTATIONS OR WARRANTIES HEREIN, MADE BY THE DEVELOPER, ITS AGENTS OR EMPLOYEES, OR ANY OTHER PERSON ON BEHALF OF THE DEVELOPER, OTHER THAN THOSE CONTAINED IN A CONTRACT OF PURCHASE AND SALE BETWEEN A PURCHASER AND THE DEVELOPER AND IN THE DISCLOSURE STATEMENT FOR THE DEVELOPMENT TO THE EXTENT MANDATED BY LAW. IN PARTICULAR, THE PURCHASER ACKNOWLEDGES AND AGREES THAT THE MATERIALS, SPECIFICATIONS, DETAILS, DIMENSIONS, LAYOUT AND FLOORPLANS SET OUT HEREIN OR OTHERWISE VIEWED BY THE PURCHASER ARE APPROXIMATE AND SUBJECT TO CHANGE WITHOUT NOTICE.

ARCHITECT  
SERIES

3306

TWO BEDROOM

VANCOUVER  
HOUSE