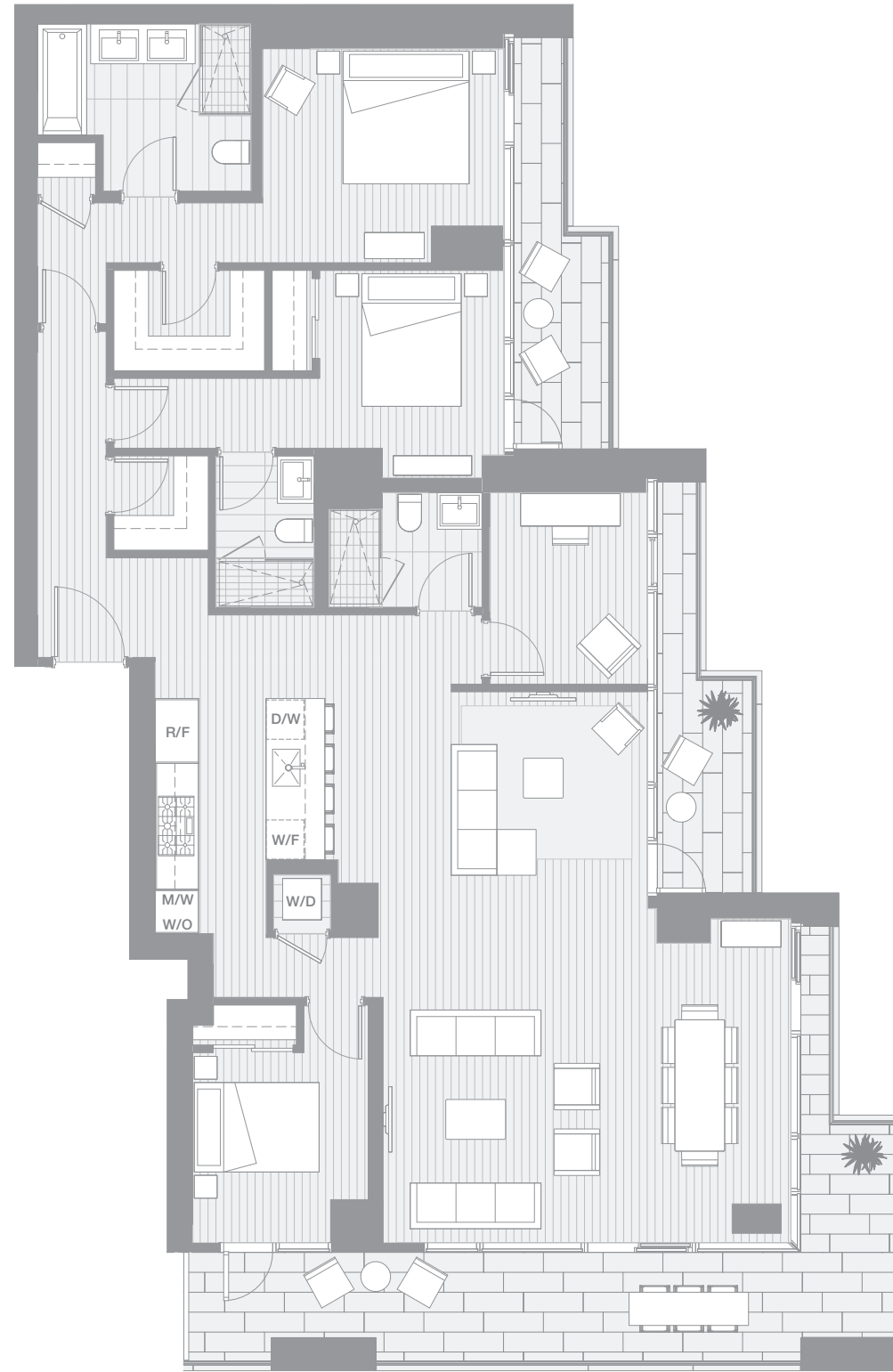


VANCOUVER HOUSE

ARCHITECT SERIES

3301



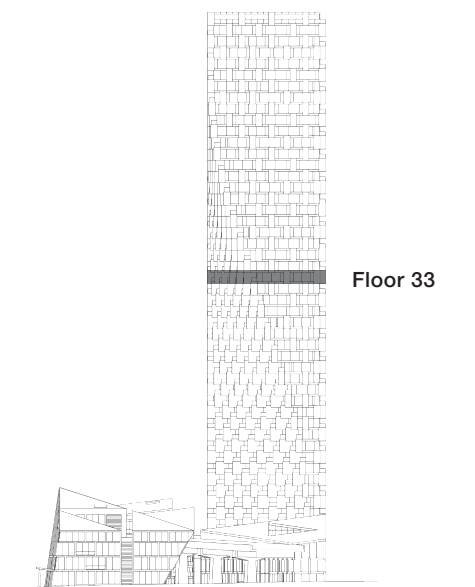
THREE BEDROOM & FAMILY ROOM

TOTAL LIVING 2202 SQ FT

Indoor Living 1752 sq ft

Outdoor Living 450 sq ft

With views spanning from Granville Island to David Lam Park and False Creek, three terraces augment the interiors of the light-filled home. All bedrooms step out onto these generous outdoor spaces. Throw unforgettable dinner parties or casual get-togethers in the open-concept living, dining and kitchen area.



westbank

BIG

ARCHITECT
SERIES

3301

THREE BEDROOM & FAMILY ROOM

VANCOUVER
HOUSE