

VANCOUVER HOUSE

ARCHITECT SERIES 3209



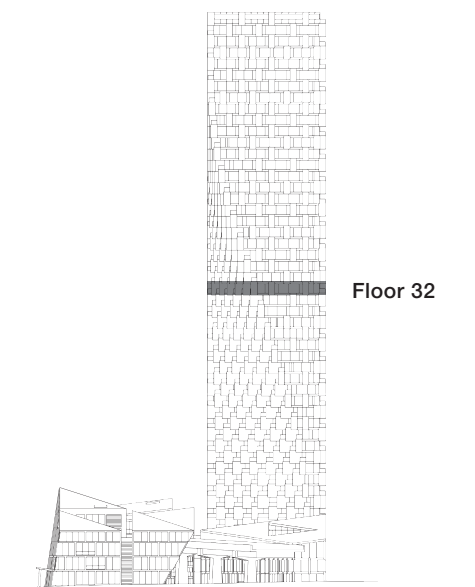
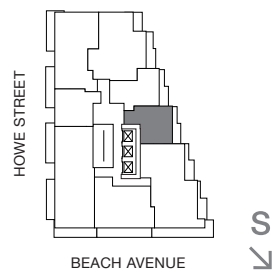
ONE BEDROOM

TOTAL LIVING 646 SQ FT

Indoor Living 554 sq ft

Outdoor Living 92 sq ft

This lovely abode features False Creek and David Lam Park views. The bedroom and the open-concept living and dining room share access to a generous terrace. An extended gallery foyer is the perfect place to display an art collection.



westbank

BIG

ARCHITECT
SERIES

3209

ONE BEDROOM

VANCOUVER
HOUSE