

# VANCOUVER HOUSE

# ARCHITECT SERIES 3202



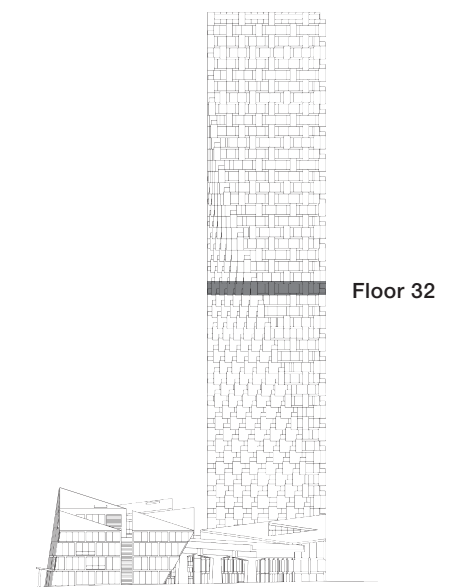
**TWO BEDROOM**

**TOTAL LIVING 1134 SQ FT**

Indoor Living 941 sq ft

Outdoor Living 193 sq ft

This sunny abode with a generous southern terrace enjoys views of Granville Island and its colourful marinas. The thoughtful design provides captivating views from the two bedrooms, as well as the open-concept living and dining area. The master bedroom features a walk-in closet, spa-like four-piece ensuite, and private balcony access. The second bedroom could also double as a light-filled office.



westbank

**BIG**

ARCHITECT  
SERIES

3202

TWO BEDROOM

VANCOUVER  
HOUSE