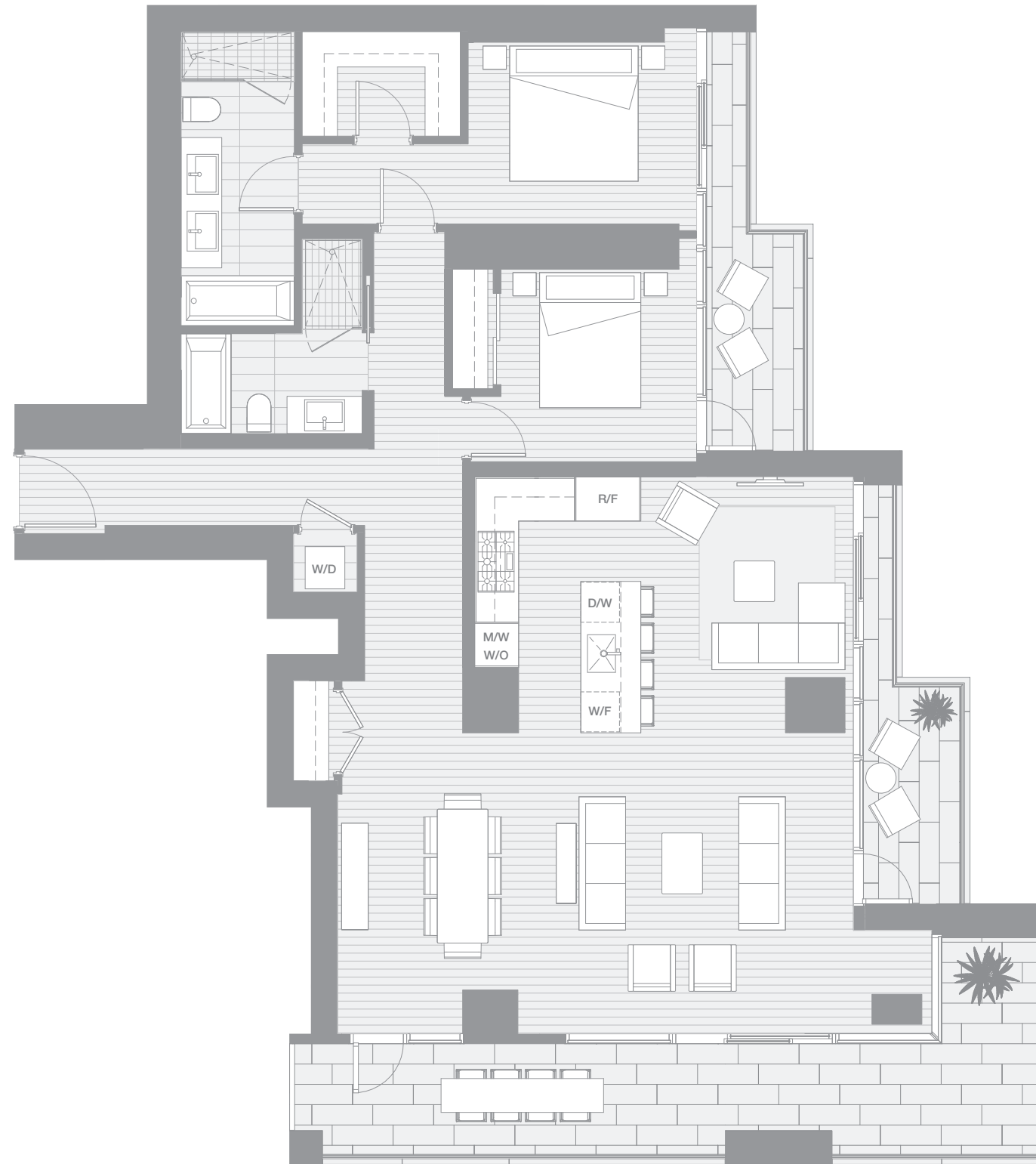


VANCOUVER HOUSE

ARCHITECT SERIES

3201



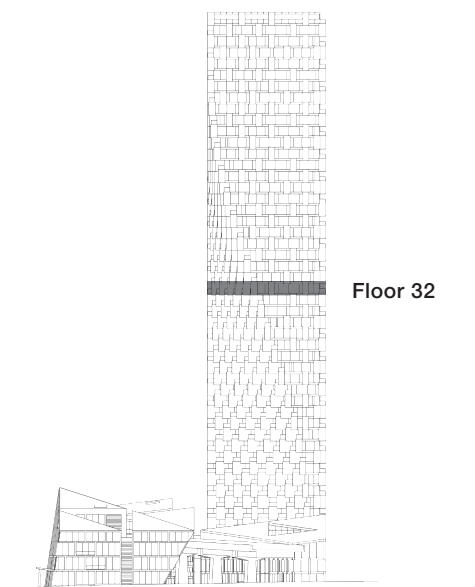
TWO BEDROOM & FAMILY ROOM

TOTAL LIVING 1902 SQ FT

Indoor Living 1482 sq ft

Outdoor Living 420 sq ft

Featuring three separate balconies, this unique corner suite offers enticing views of Granville Island and David Lam Park. The open-concept living and dining space is perfect for entertaining while two private bedrooms offer a tranquil retreat from the city including a luxurious five-piece ensuite and a walk-in closet in the master bedroom.



westbank

BIG

ARCHITECT
SERIES

3201

TWO BEDROOM & FAMILY ROOM

VANCOUVER
HOUSE