

# VANCOUVER HOUSE

# ARCHITECT SERIES 3006



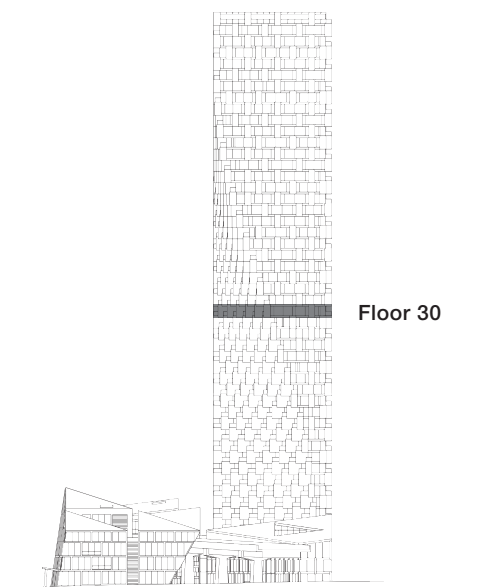
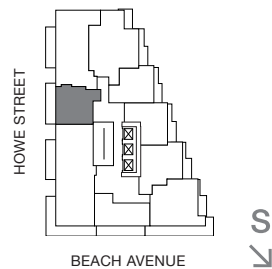
**ONE BEDROOM**

**TOTAL LIVING 658 SQ FT**

Indoor Living 532 sq ft

Outdoor Living 126 sq ft

This charming home is centred around views of English Bay. A generous west-facing terrace embraces both the open-concept living and dining area, and bedroom. A large four-piece bathroom with separate tub and shower creates a tranquil oasis.



westbank

**BIG**

ARCHITECT  
SERIES

3006

ONE BEDROOM

VANCOUVER  
HOUSE