

VANCOUVER HOUSE

ARCHITECT SERIES

2503



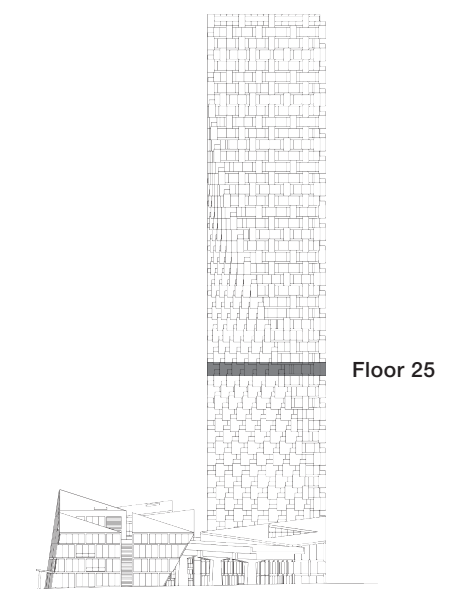
ONE BEDROOM FLEX

TOTAL LIVING 513 SQ FT

Indoor Living 361 sq ft

Outdoor Living 152 sq ft

This home makes the perfect pied-à-terre. From the moment of arrival in the foyer, the eye is drawn to the view toward Granville Island from the south-facing balcony, creating a sense of harmonious flow. Space is amplified by a streamlined layout and a Murphy bed custom-designed by BIG.



westbank

BIG

ARCHITECT
SERIES

2503

ONE BEDROOM FLEX

VANCOUVER
HOUSE