

# VANCOUVER HOUSE

# ARCHITECT SERIES

# 2210



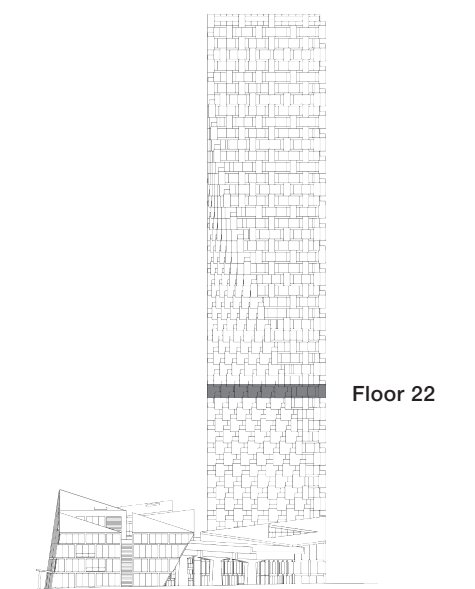
**ONE BEDROOM**

**TOTAL LIVING 545 SQ FT**

Indoor Living 479 sq ft

Outdoor Living 66 sq ft

This lovely home greets you with a view of False Creek and David Lam Park as you enter. The open living area looks directly onto an east-facing copper-clad balcony, while the well-defined dining room provides a perfect space for entertaining.



westbank

**BIG**

THERE ARE NO REPRESENTATIONS OR WARRANTIES HEREIN, MADE BY THE DEVELOPER, ITS AGENTS OR EMPLOYEES, OR ANY OTHER PERSON ON BEHALF OF THE DEVELOPER, OTHER THAN THOSE CONTAINED IN A CONTRACT OF PURCHASE AND SALE BETWEEN A PURCHASER AND THE DEVELOPER AND IN THE DISCLOSURE STATEMENT FOR THE DEVELOPMENT TO THE EXTENT MANDATED BY LAW. IN PARTICULAR, THE PURCHASER ACKNOWLEDGES AND AGREES THAT THE MATERIALS, SPECIFICATIONS, DETAILS, DIMENSIONS, LAYOUT AND FLOORPLANS SET OUT HEREIN OR OTHERWISE VIEWED BY THE PURCHASER ARE APPROXIMATE AND SUBJECT TO CHANGE WITHOUT NOTICE.

ARCHITECT  
SERIES

2210

ONE BEDROOM

VANCOUVER  
HOUSE