

VANCOUVER HOUSE

ARCHITECT SERIES 2209



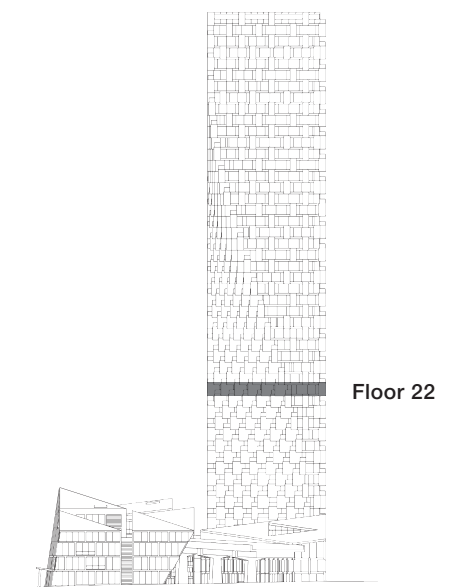
ONE BEDROOM

TOTAL LIVING 536 SQ FT

Indoor Living 464 sq ft

Outdoor Living 72 sq ft

This charming pied-à-terre features a large foyer suitable for displaying an art collection. This opens onto the open-concept kitchen, dining, and living area with adjoining east-facing terrace, boasting views of False Creek and David Lam Park.



westbank

BIG

ARCHITECT
SERIES

2209

ONE BEDROOM

VANCOUVER
HOUSE