

VANCOUVER HOUSE

ARCHITECT SERIES

2205



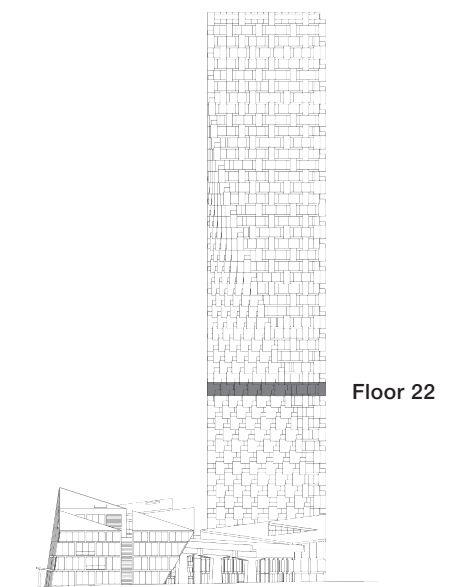
TWO BEDROOM

TOTAL LIVING 1196 SQ FT

Indoor Living 846 sq ft

Outdoor Living 350 sq ft

Defined by a huge wrap-around terrace with southwestern exposure, this deluxe corner home offers the ultimate indoor and outdoor lifestyle. The open-concept living, dining, and kitchen area opens to views of Granville Island, False Creek, and David Lam Park. The master bedroom and ensuite complete with soaker tub and walk-in shower offers a tranquil refuge.



westbank

BIG

ARCHITECT
SERIES

2205

TWO BEDROOM

VANCOUVER
HOUSE