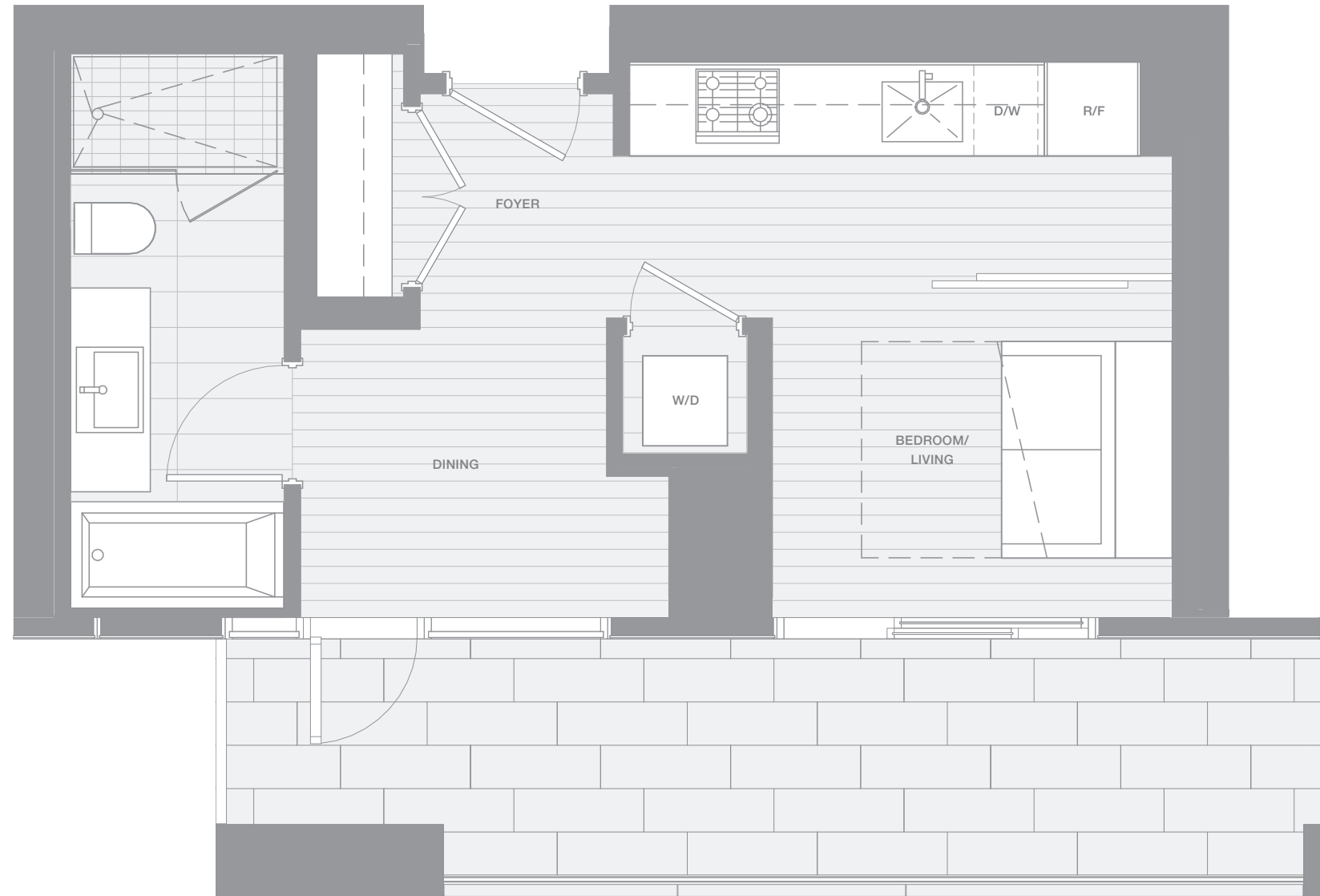


VANCOUVER HOUSE

ARCHITECT SERIES

2203



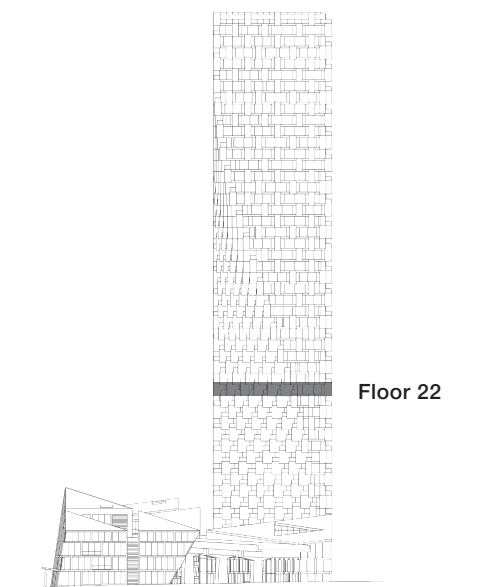
ONE BEDROOM FLEX

TOTAL LIVING 513 SQ FT

Indoor Living 361 sq ft

Outdoor Living 152 sq ft

This pied-à-terre is defined by the expansive south-facing terrace. Space is amplified by a streamlined layout and a Murphy bed custom-designed by BIG. From the moment of arrival in the foyer, the gaze is led through the dining area to the view from the generous south-facing terrace, creating a sense of harmonious flow.



westbank

BIG

ARCHITECT
SERIES

2203

ONE BEDROOM FLEX

VANCOUVER
HOUSE