

# VANCOUVER HOUSE

# ARCHITECT SERIES 2003



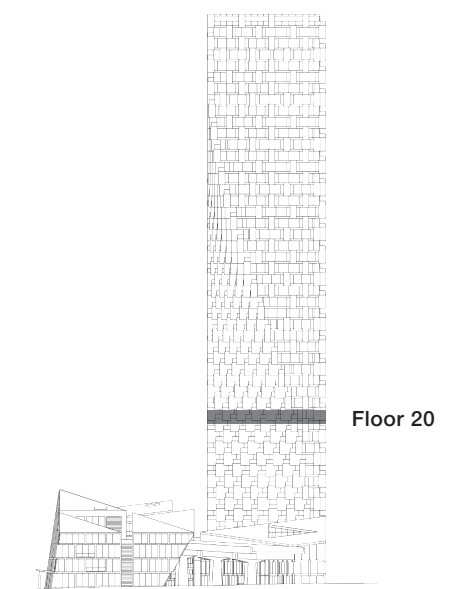
**ONE BEDROOM FLEX**

**TOTAL LIVING 518 SQ FT**

Indoor Living 366 sq ft

Outdoor Living 152 sq ft

This home makes the perfect pied-à-terre. From the moment of arrival in the foyer, the eye is drawn to the view from the expansive south-facing balcony towards Granville Island, creating a sense of harmonious flow. Space is amplified by a streamlined layout and a Murphy bed custom designed by BIG.



westbank

**BIG**

ARCHITECT  
SERIES

2003

ONE BEDROOM FLEX

VANCOUVER  
HOUSE