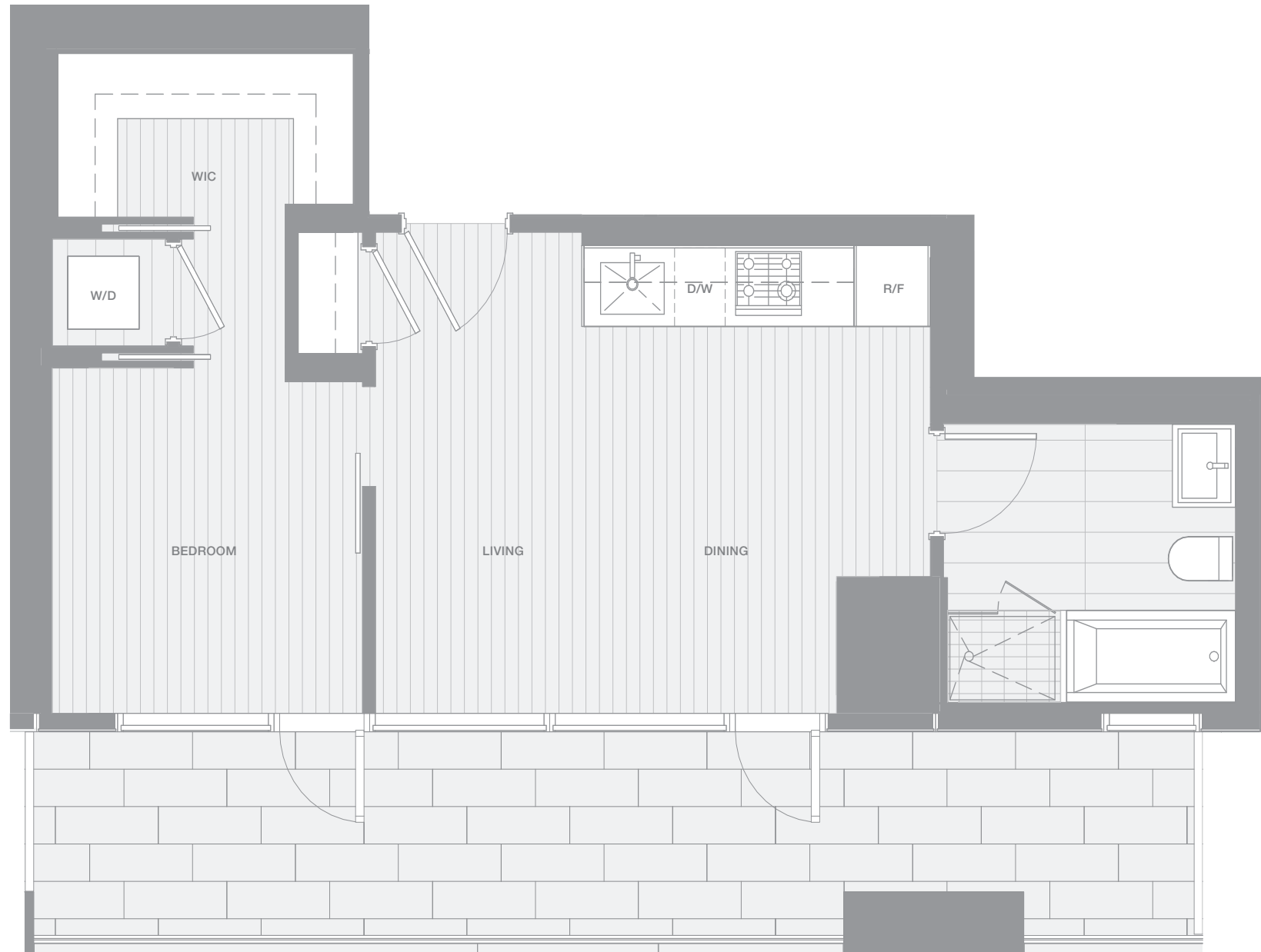


VANCOUVER HOUSE

ARCHITECT SERIES

1703



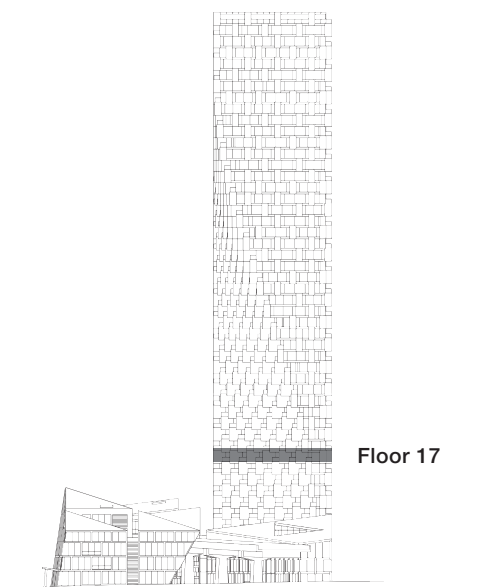
ONE BEDROOM

TOTAL LIVING 723 SQ FT

Indoor Living 521 sq ft

Outdoor Living 202 sq ft

This charming home benefits from southern exposure along its entire length. A generous copper-clad balcony with views of Granville Island is accessible from both the open-concept living and dining area as well as the bedroom, which features a generous walk-in closet.



westbank

BIG

THERE ARE NO REPRESENTATIONS OR WARRANTIES HEREIN, MADE BY THE DEVELOPER, ITS AGENTS OR EMPLOYEES, OR ANY OTHER PERSON ON BEHALF OF THE DEVELOPER, OTHER THAN THOSE CONTAINED IN A CONTRACT OF PURCHASE AND SALE BETWEEN A PURCHASER AND THE DEVELOPER AND IN THE DISCLOSURE STATEMENT FOR THE DEVELOPMENT TO THE EXTENT MANDATED BY LAW. IN PARTICULAR, THE PURCHASER ACKNOWLEDGES AND AGREES THAT THE MATERIALS, SPECIFICATIONS, DETAILS, DIMENSIONS, LAYOUT AND FLOORPLANS SET OUT HEREIN OR OTHERWISE VIEWED BY THE PURCHASER ARE APPROXIMATE AND SUBJECT TO CHANGE WITHOUT NOTICE.

ARCHITECT
SERIES

1703

ONE BEDROOM

VANCOUVER
HOUSE