

# VANCOUVER HOUSE

# ARCHITECT SERIES

# 1605



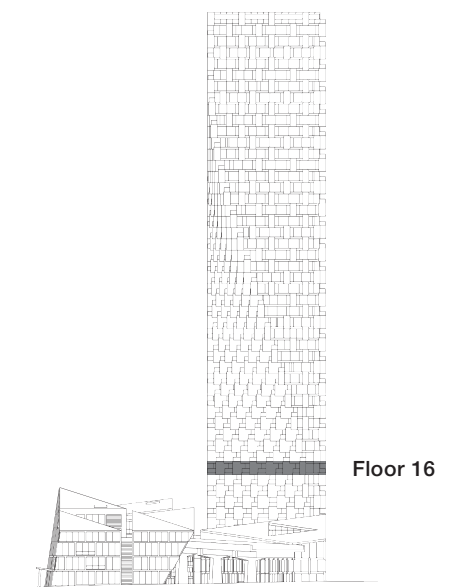
**TWO BEDROOM**

**TOTAL LIVING 1203 SQ FT**

Indoor Living 848 sq ft

Outdoor Living 355 sq ft

The generous living space in this stunning corner home is augmented by two terraces. The master suite boasts a four-piece ensuite and expansive west terrace facing towards English Bay. The south-facing terrace looks towards False Creek and is accessible by the second bedroom. The open-concept living and dining area enjoys access to both terraces, ideal for entertaining.



westbank

**BIG**

ARCHITECT  
SERIES

1605

TWO BEDROOM

VANCOUVER  
HOUSE