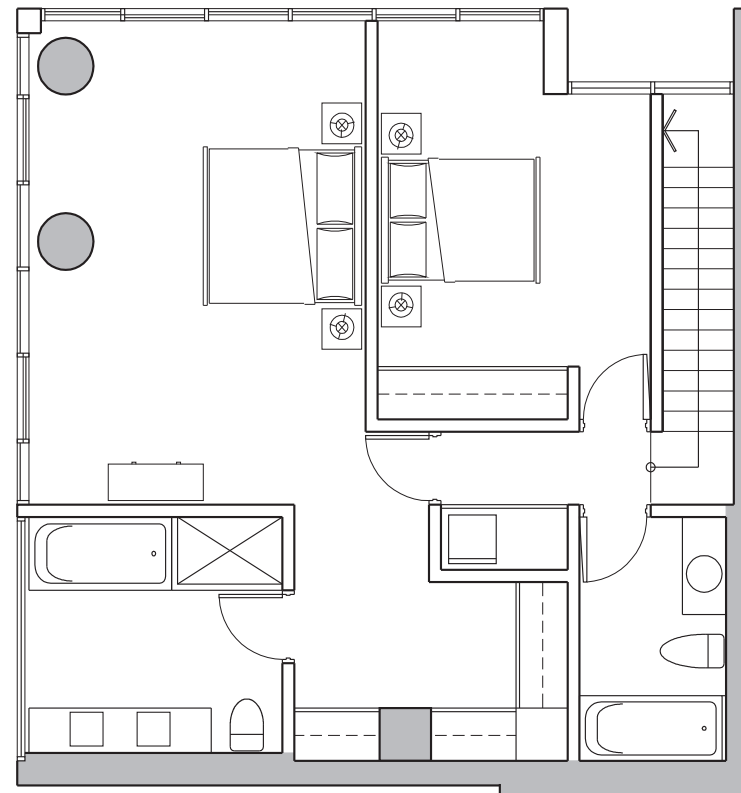


GROUND FLOOR



2ND FLOOR

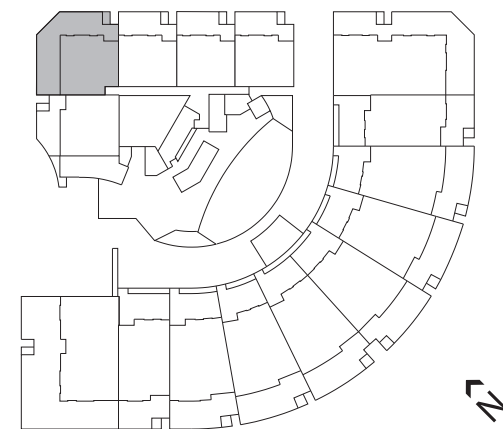
290 BEACH CRESCENT

TWO BEDROOM

ENCLOSED AREA (sq. ft.) 1,837

TERRACE/BALCONY (sq. ft.) 525

TOTAL AREA (sq. ft.) 2,362



Ceiling heights of the majority of the area in the living room, dining room and bedrooms are approximately 8'. Drop ceilings may apply to other areas. Cove ceilings may be incorporated.